

helloworld
TRAVEL
THE TRAVEL PROFESSIONALS

HAWAII

VIVA
HOLIDAYS

CELEBRATING

50
Years
OF TRAVEL

EXPERIENCE HAWAI'I WITH VIVA HOLIDAYS!

Discover the beauty, culture and adventures waiting for you in Hawai'i. From learning to surf in the calm Waikiki waves to relaxing beachside with a Mai Tai in hand, Hawai'i is the place to find your holiday paradise.

Viva Holidays is proud to be celebrating 50 years in the travel business. Trust us to make your dream Hawaiian holiday a reality.

CHOOSE VIVA HOLIDAYS AND LIVE A LIFE OF TRAVEL.



Front cover image: Kalalau Trail, Kaua'i
Image this page: Waikiki, O'ahu

With soft white sand and azure water Lanikai Beach is one of O'ahu's best beaches



Hanawi Falls, Maui

CONTENTS

Navigating This Brochure	5
Travel Tips	7
Experiences You'll Love	8
Car Hire	10
O'ahu	11
Maui	24
Island of Hawai'i	28
Kaua'i	31
Accommodation Index	34
Booking Conditions	35



CELEBRATING



WHY CHOOSE VIVA HOLIDAYS

Viva Holidays has been creating exceptional worldwide holiday experiences for 50 years. Your arrangements will be managed by our travel specialists who are dedicated to servicing enquiries to your chosen destination and are experts at designing holidays to perfectly suit your travel needs. You'll always be in experienced hands when you travel with Viva Holidays.

MORE CHOICE

Our extensive product range caters for every type of holiday. Accommodation, car hire, theme parks, attractions, day and extended tours, rail tours and cruises – we've got it covered.

We have incredible deals available throughout the year, so make sure you ask your travel agent for our best price.

EXCEPTIONAL SERVICE

Exceptional customer service is behind everything we do. That's why we've regularly been voted as the Best International and Australian wholesaler at the National Travel Industry Awards. Our team are passionate about travel and providing outstanding service. Let us do the research, planning and booking to ensure your holiday is one you'll always remember.

PEACE OF MIND

Viva Holidays is a proud member of ATAS, the Australian Federation of Travel Agents Travel Accreditation Scheme, having met the strict financial and customer service accreditation criteria. When you book your holiday with Viva Holidays, you will have peace of mind knowing that you are booking with one of Australia's most trusted travel companies.

24/7 ASSISTANCE

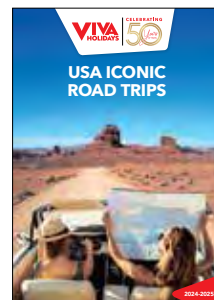
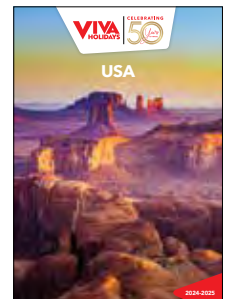
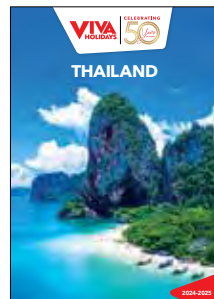
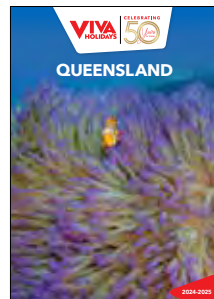
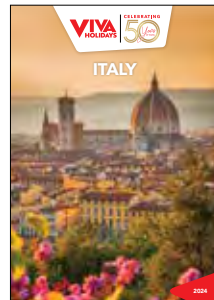
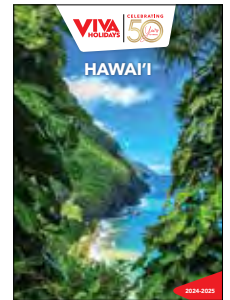
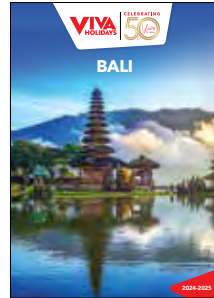
When you book with Viva Holidays, you'll never be on your own. In the event of unforeseen circumstances, our customer care team is available 24 hours a day, seven days a week.

TAILOR MADE HOLIDAYS

Whether it's hopping between the stunning Hawaiian Islands, appreciating the panoramic views and deep valley gorges of Waimea Canyon or relaxing with a Mai Tai on the famous Waikiki Beach, our team of travel specialists can design a custom-made itinerary just for you!

Let us create your dream holiday today.

LIVE A LIFE OF TRAVEL. LET VIVA HOLIDAYS TAKE YOU THERE!





Wailua Falls, Kauai



Waikiki



NAVIGATING THIS BROCHURE

The following symbols should be used as a guide to assist in choosing the accommodation or touring option that best suits your needs.

Our Destination Specialists have negotiated a range of special offers including free meals, free nights and more. Look for the following symbols on individual property listings and ask your travel agent for full details of the offer available.



Early Bird Offer

A discount off the regular room price is available at certain times of the year for advance bookings.



Free Night Offer

Receive one or more free nights for stays at certain times of the year.



Bonus Offer

A bonus offer is available at certain times of the year, e.g. free breakfast, food and beverage credit, spa treatment, late check-out, room upgrade and more.



Kids Dining Offer

A dining offer for children is available, e.g. discounted or free meals. Child ages, meal types and conditions vary.



Honeymoon Offer

A special bonus offer is available if you are celebrating your honeymoon. This may include sparkling wine, flowers, chocolate platters, spa treatment discounts, or room upgrades. A minimum stay may be required and conditions vary. Advise your travel agent at the time of booking.

SYMBOL GUIDE



Properties offering free Wi-Fi access in common areas and rooms.



Properties offering in-room disabled facilities.



Properties offering family friendly facilities, which may include a kids club, kids eat free offer, family or interconnecting rooms and discounts off a second room.



Properties featuring the Luxury Collection symbol, in our view, provide an exceptional standard of accommodation, facilities and service.

OUR RATINGS

The accommodation ratings featured in this brochure will provide a general indication of the standard of accommodation and may alter throughout the year due to a change of circumstance. These are our views and are not related to any other rating system. We recommend checking with your travel agent to find the accommodation that best suits your needs and budget.

- ◆◆ Budget
- ◆◆◆ Comfortable
- ◆◆◆◆ Superior
- ◆◆◆◆◆ Deluxe
- ◇ Half rating



Hop in an outrigger canoe and ride the waves at Waikiki Beach



PACIFIC OCEAN

TRAVEL TIPS

WHEN TO GO

Hawai'i offers warm and sunny weather year round. The average sea temperature ranges from 25°C to 29°C allowing for great swimming weather all year long. May to October is hot and humid, so lather on the sunscreen and enjoy the many water activities the islands have to offer. November to April brings the wet season creating Hawai'i's rich, green, tropical environment. This season is the best time for avid surfers as large ocean swells create Hawai'i's legendary big waves.

VISAS & PASSPORTS

All travellers to Hawai'i must carry a passport valid for at least six months beyond the date of departure from Australia and obtain the Electronic System for Travel Authorisation (ESTA) prior to travel, see www.cbp.gov/esta for more details. As visa information can change at any time, we recommend you seek advice regarding passports, visas, and other travel requirements for the countries you intend visiting from the Australian Government at smartraveller.gov.au

TIME

Hawai'i is 20 hours behind Australian Eastern Standard Time (AEST). Daylight Saving Time is not observed.

CURRENCY

The US Dollar (USD) is the official unit of currency in Hawai'i.

TIPPING

In Hawai'i tipping is expected in restaurants (15 – 20% of the bill), bars (USD1 per drink) and taxis (10 – 15%). Also tip hotel porters (USD1 – 2 per bag), housekeeping (USD1 – 2 per night), parking valets (USD3 – 5) and tour guides (USD2 per day).

ELECTRICITY

110V 60Hz. Two flat pin plug. An adapter is required.

ACCOMMODATION, RESORT & CLEANING FEES

Many properties in Hawai'i charge a daily Resort or Amenity Fee. What the fee includes varies from hotel to hotel and you should check with your travel agent at the time of booking. If applicable, the Resort or Amenity Fee is included in the Australian Dollar "From" price on the property listing in this brochure. The Fee is to be paid by you, in US Dollars, when you check-out of your hotel unless otherwise specified. Properties that do not charge a Fee feature a 'No Resort Fee' symbol on their listing in the brochure. Some apartment style properties charge a Mandatory Departure Cleaning Fee which is to be paid directly to the hotel by you upon check-out. These fees are noted on the property listing in this brochure and may vary by room category. All fees and their inclusions are subject to change at any time.

GETTING AROUND

Take the time to explore and discover as you drive your way around the Hawaiian Islands. Driving is on the right hand side of the road.

PUBLIC HOLIDAYS

Be prepared when you're travelling to Hawai'i as the state celebrates many national public holidays and events.

2024

Memorial Day	27 May
Independence Day	4 July
Veterans Day	11 November
Thanksgiving	28 November

2025

Martin Luther King Day	20 January
President's Day	17 February

Note: Black Friday occurs the day after Thanksgiving Day and is a public holiday in some states. It is one of the busiest shopping days of the year, as it marks the unofficial beginning of Christmas shopping.

TEMPERATURE & RAINFALL

O'ahu	J	F	M	A	M	J	J	A	S	O	N	D
Temperature (max °C)	26	26	27	28	29	30	30	31	31	30	28	27
Average rainfall (mm)	60	50	56	16	16	7	13	15	20	48	63	85
Maui	J	F	M	A	M	J	J	A	S	O	N	D
Temperature (max °C)	26	26	27	27	29	29	30	30	30	30	28	27
Average rainfall (mm)	105	73	69	47	20	7	10	12	9	31	66	83
Island of Hawai'i	J	F	M	A	M	J	J	A	S	O	N	D
Temperature (max °C)	26	27	27	28	28	29	30	31	30	29	28	27
Average rainfall (mm)	198	180	270	255	161	108	146	149	117	139	210	211
Kaua'i	J	F	M	A	M	J	J	A	S	O	N	D
Temperature (max °C)	25	25	25	26	27	28	28	29	29	28	27	25
Average rainfall (mm)	150	85	106	89	80	43	54	45	60	112	138	131

✈ INTERNATIONAL AIRPORT
✈ REGIONAL AIRPORT

Hawai'i Tourism Authority (HTA) for Johnson

Waipi'o Bay

• Hilo ✈

ISLAND OF HAWAII



EXPERIENCES YOU'LL LOVE

The best part of any journey is the experiences you have along the way, leaving you with memories to relive long after the holiday is over.

Hawai'i has countless amazing things to see and do. Here are some of our favourites to inspire your wanderlust.



O'AHU'S NORTH SHORE

Soak up the laidback lifestyle of O'ahu's North Shore. A surfing mecca, this is the place to see pro surfers catch epic tubes. Waimea Bay, Ehukai Beach (Banzai Pipeline) and Sunset Beach are where you'll see big wave surfing. Between November and February the waves can swell up to 10 metres or more! Watch Green sea turtles napping on the warm sand at Laniakea Beach and stop at charming Haleiwa for surf shops and rainbow-coloured shave ice. Don't miss Giovanni's Shrimp Truck, a local favourite.

WONDERFUL WAIKIKI

Famous Waikiki Beach is the place to be. Relax on the warm Waikiki sands, soak up the sun and cool off with a dip in the welcoming waters. Learn to surf on the gentle waves or paddle out on an outrigger canoe. Stroll along Kalakaua Avenue where you'll find world-class shopping, dining and entertainment options. For the adventurous, hike the 1.3 kilometre trail to the summit of Diamond Head for stunning views of Waikiki. Take a snap with the Duke Kahanamoku statue, he was known as the 'father of modern surfing'. End each day with a refreshing Mai Tai.



TV & MOVIE LOCATIONS

The islands of Hawai'i have been the backdrop to many movies and TV shows. From blockbuster films 50 First Dates and Blue Hawaii to iconic TV shows Magnum P.I. and Hawaii Five-0, Hawai'i's white beaches, lush jungles and stunning coastlines have been on show. The unofficial 'backlot of Hawai'i' Kualoa Ranch on O'ahu is host to many films. See the boneyard from Kong: Skull Island, the infamous fallen tree in Jurassic Park and Hurley's golf course from LOST. In Honolulu visit the Hawaii Five-0 headquarters, Ali'iolani Hale. On Kaua'i Wailua Falls may look familiar from the opening credits of Fantasy Island.





• Watch a stunning Hawaiian sunset from Waikiki Beach

HAWAI'I VOLCANOES NATIONAL PARK

Hawai'i Volcanoes National Park, on the Island of Hawai'i, delivers some of Mother Nature's most awe-inspiring wonders. Travel along Crater Rim Drive which circles Kilauea Caldera and see steam vents and sulphur banks. Walk one of the park's many hiking trails and discover craters, scalded deserts, rainforests and petroglyphs. For a different view, take a helicopter flight over the national park. See the enormity of this otherworldly landscape and the effects of the recent eruptions.



Hawai'i Volcanoes National Park

Hawai'i Tourism Authority (HTA) / Tommy Lundberg

HALEAKALA NATIONAL PARK

Feel the power of nature at Haleakala National Park on Maui. This dormant volcano's summit, at 3,055 metres above sea level, is the stage for breathtaking land and skylines. Wake up early and head to the Visitor Center to catch the sunrise. Watch the sun peek over the horizon and the sky light up with colour over a sea of clouds. Once the sun is up take in the Mars-like landscape. Hiking trails and horseback riding is available, so you can explore the park's natural beauty. For the night owls, watch the sun set or try stargazing.



Haleakala National Park

NA PALI COAST

Towering dramatically over the ocean, the emerald-hued cliffs and razor sharp ridges of the Na Pali Coast on Kaua'i are an unforgettable sight. Take a boat ride or kayak along the coast and marvel at the soaring cathedral cliffs and beautiful hidden beaches. The adventurous will enjoy hiking along the Kalalau Trail for panoramic water views, cascading waterfalls and deep, narrow valleys. For stunning views without the hike, take to the skies on a helicopter flight over the lush green cliffs and see areas of the coast that are inaccessible by land and sea.



Kalalau Lookout

CAR HIRE



AVIS

Why not add Avis to your travel plans and make the most of your holiday by enjoying the flexibility and convenience that an Avis car rental provides. Situated at all major airports and offering a wide range of latest model vehicles to choose from, all at great rates, renting with Avis is sure to make your holiday escape more enjoyable.

Includes:

- Unlimited mileage
- Loss Damage Waiver (LDW)
- State Tax
- Third Party Liability
- State Imposed Surcharge
- Airport Contract fee where applicable
- All vehicles include air-conditioning

Does Not Include:

- Fuel
- Road tolls
- Additional driver fee
- Young driver fee
- Optional services and equipment
- One way rentals (subject to availability, ask your travel agent for details)

Conditions:

All prices are based on a 24 hour rental period (e.g. pick up 9am the first day; drop off 9am the next day). Any time over the 24 hour period will incur an additional charge. Minimum age is 21. Drivers aged 21 to 24 years inclusive may incur an additional daily charge. Additional drivers must be at least 25 years. Drivers must have a full and valid driver's license. Renters with a prepaid voucher are required to leave a cash or credit card deposit to cover the estimated extra costs not included in the rate.

The vehicles shown are examples. Specific makes/ models within a car class may vary in availability and between locations.

Based on per vehicle. Not all vehicle types are available at all locations. Check with your travel agent at time of booking. Car hire prices for other states also available.



- Overnight Bag
- Medium Suitcase
- Large Suitcase

KIA RIO (or similar)

GROUP A

- Auto
- 4 door hatch



x5

GROUP A

1-4 DAYS	5-7 PER WEEK	EXTRA DAYS
\$108*	\$536*	\$77*

KIA SOUL (or similar)

GROUP B

- Auto
- 4 door sedan



x5

GROUP B

1-4 DAYS	5-7 PER WEEK	EXTRA DAYS
\$122*	\$606*	\$87*

TOYOTA COROLLA (or similar)

GROUP C

- Auto
- 4 door sedan



x5

GROUP C

1-4 DAYS	5-7 PER WEEK	EXTRA DAYS
\$140*	\$700*	\$100*

TOYOTA CAMRY (or similar)

GROUP E

- Auto
- 4 door sedan



x5

GROUP E

1-4 DAYS	5-7 PER WEEK	EXTRA DAYS
\$149*	\$744*	\$107*

CHRYSLER 300 (or similar)

GROUP H

- Auto
- 4 door sedan



x5

GROUP H

1-4 DAYS	5-7 PER WEEK	EXTRA DAYS
\$204*	\$1019*	\$146*

FORD MUSTANG (or similar)

GROUP K

- Auto
- 2 door convertible



x4

GROUP K

1-4 DAYS	5-7 PER WEEK	EXTRA DAYS
\$204*	\$1019*	\$146*

TOYOTA RAV4 (or similar)

GROUP F

- Auto
- 4 door SUV



x5

GROUP F

1-4 DAYS	5-7 PER WEEK	EXTRA DAYS
\$193*	\$961*	\$138*

FORD EDGE (or similar)

GROUP W

- Auto
- 4 door SUV



x5

GROUP W

1-4 DAYS	5-7 PER WEEK	EXTRA DAYS
\$204*	\$1019*	\$146*

CHEVROLET TAHOE (or similar)

GROUP Z

- Auto
- 4 door SUV



x7

GROUP Z

1-4 DAYS	5-7 PER WEEK	EXTRA DAYS
\$253*	\$1261*	\$181*

CHEVROLET SUBURBAN (or similar)

GROUP L

- Auto
- 4 door SUV



x7

GROUP L

1-4 DAYS	5-7 PER WEEK	EXTRA DAYS
\$284*	\$1416*	\$203*

* FROM PRICES ARE A GUIDE ONLY, subject to change and availability and are in Australian Dollars. Prices are per vehicle per day, unless otherwise specified. For full terms and conditions, refer to the Booking Conditions on the inside back cover of this brochure.



Waikiki



O'AHU

From buzzing city life to laidback surf towns, O'ahu offers an amazing and diverse range of experiences. Famous Waikiki boasts beachfront resorts, live Hawaiian entertainment and a variety of shopping options.

SEE

- Watch the pro surfers on the North Shore
- See the movie sets and sights at Kualoa Ranch

DO

- Hit the shops of Kalakaua Avenue
- Learn to surf at Waikiki Beach
- Visit the newest attraction at The LineUp at Wai Kai
- Climb to the top of Diamond Head for stunning views of Waikiki
- Visit Iolani Palace, the only royal home in the United States

EAT & DRINK

- Sip on a Mai Tai at Duke's Waikiki
- Cool off with shave ice from Matsumoto Shave Ice in Hale'iwa
- Visit SALT at Our Kaka'ako for a range of local cuisines

WHAT'S ON

Lei Day celebrations

1 May

Honolulu Triathlon

19 May

King Kamehameha I Day

11 June

Dukes OceanFest

17 to 25 August

Hawai'i Food and Wine Festival

October (dates to be confirmed)

Triple Crown of Surfing

November to December (dates to be confirmed)

O'AHU

REF.	HOTELS	PAGE
1	Courtyard by Marriott Oahu North Shore	23
2	Turtle Bay Resort, North Shore	23

WAIKIKI

REF.	APARTMENTS	PAGE
3	Aston at the Waikiki Banyan	13
4	Aston Waikiki Sunset	14
5	Castle Waikiki Shore	13
6	Embassy Suites by Hilton Waikiki Beach Walk	15
7	Ilikai Hotel & Luxury Suites	16
8	Regency on Beachwalk Waikiki by Outrigger	18
9	The Ritz-Carlton Residences, Waikiki Beach	21
10	Trump International Hotel Waikiki	22

REF.	HOTELS	PAGE
11	Aqua Oasis	13
12	Aston Waikiki Circle Hotel	13

REF.	HOTELS	PAGE
13	Halekulani	20
14	Hilton Hawaiian Village Waikiki Beach Resort	19
15	Hilton Waikiki Beach	16
16	Hyatt Centric Waikiki Beach	15
17	Hyatt Regency Waikiki Beach Resort & Spa	19
18	Luana Waikiki Hotel & Suites	15
19	Moana Surfrider, A Westin Resort & Spa	21
20	OHANA Waikiki East by Outrigger	14
21	Outrigger Reef Waikiki Beach Resort	20
22	Outrigger Waikiki Beachcomber Hotel	17
23	Outrigger Waikiki Beach Resort	17
24	Prince Waikiki	18
25	Queen Kapi'olani Hotel	16
26	The Royal Hawaiian, A Luxury Collection Resort	22
27	Sheraton Princess Kaiulani	15
28	Sheraton Waikiki	20
29	Waikiki Beach Marriott Resort & Spa	18
30	Waikiki Malia	14

O'AHU TOURS



AIRPORT TRANSFERS

Get your holiday off to a great start with a door-to-door shared coach transfer service. Convenient transfers are available 24 hours a day, 7 days a week from Daniel K. Inouye International Airport in Honolulu to Waikiki and other Honolulu accommodation.

Approximate travel distance from Daniel K. Inouye International Airport, Honolulu to Waikiki is 18 kilometres and the North Shore is 60 kilometres.

	Adult/Child
Waikiki accommodation & Pier	\$44*^
North Shore accommodation	\$221*^

^Price based on per person one way to/from Daniel K. Inouye International Airport, Honolulu. Children 0 to 3 yrs are free when they do not occupy a seat.



USS ARIZONA, PEARL HARBOR & HONOLULU CITY TOUR

This unforgettable tour begins with a stop at Pearl Harbor Visitor Center to see the Arizona Memorial. The tour continues to the historic National Memorial Cemetery of the Pacific at Punchbowl, ending with a narrated tour of downtown Honolulu, visiting historical landmarks including the 'Iolani Palace.

Includes:

- Admission and boat ride to USS Arizona Memorial
- Admission to Pearl Harbor Visitor Center
- Return transfers from Waikiki accommodation

Duration: 5 hours

Departs: Daily from Waikiki at 7:40am, 10am

	Adult	Child 4-11 yrs
City Tour	\$115*	\$73*



PRIVATE AIRPORT TRANSFERS

Arrive in style with a private car transfer. Car transfers are available from Daniel K. Inouye International Airport, Honolulu to Waikiki and Honolulu accommodation, 24 hours a day, 7 days a week. Sit back, relax and enjoy the passing scenery as you are transferred in air-conditioned comfort.

Approximate travel distance from Daniel K. Inouye International Airport to Waikiki is 18 kilometres, and the North Shore is 60 kilometres.

	1 to 5 People
Waikiki accommodation & Pier	\$352*^
North Shore accommodation	\$845*^

^Price based on per vehicle one way to/from Daniel K. Inouye International Airport, Honolulu.



GRAND CIRCLE ISLAND TOUR

This tour is the perfect way to see all of O'ahu's must-see sights in one day! Experience stunning Hanauma Bay, the North Shore surfing beaches, cultural Waimanalo town, and the historic Byodo-In and Laie Hawai'i temples. Visit the Dole Plantation and stop for photo opportunities at the 'Blow Hole' and Nu'uuanu Pali Lookout.

Includes:

- Kualoa Ranch including Legends and Legacy Tram Tour
- Return transfers from Waikiki accommodation

Duration: 9 hours 30 minutes

Departs: Daily from Waikiki at 6:45am

	Adult	Child 4-11 yrs
Full Day Tour	\$208*	\$167*



GO OAHU ALL-INCLUSIVE PASS

The Go Oahu All-Inclusive Pass is the best choice for maximum savings and flexibility. Save up to 55% off retail prices on admission to over 30 top activities, attractions and tours for one low price. Enjoy the flexibility to choose attractions as you go and take up to 14 days to use your pass. All 3, 4, 5, or 7 day passes include a bonus choice of a Dolphin Encounter by Sea Life Park, Polynesian Cultural Center Ali'i Luau and Dinner Show, Diamond Head Luau, Makani Catamaran Sunset Sail, or Oahu Hidden Gems Tour.

Includes:

- Admission to over 30 attractions
- Attraction guide
- Bonus attraction choice

	Adult	Child 3-12 yrs
3 Day Pass	\$361*	\$314*
4 Day Pass	\$471*	\$408*
5 Day Pass	\$519*	\$456*
7 Day Pass	\$582*	\$511*



WAIKELE OUTLETS SHUTTLE

Waikēle Premium Outlets is a true shopper's delight. If you've come to Hawaii with a shopping list, make sure to check out the Waikēle Outlets first for discounts.

The Waikēle Outlets Shopping Shuttle – Roberts Hawaii's most popular activity on Oahu – is the hassle-free way to go shopping for bargains in more than 50 legendary brand name stores. Let Roberts Hawaii pick you up at one of their convenient locations throughout Waikēle. Then just sit back and relax in a plush, air-conditioned motor coach. No traffic. No parking. No worries.

Includes:

- Return Waikēle Outlets Shopping Shuttle
- Waikēle Premium Outlets digital VIP booklet

Duration: 5 hours 30 minutes

Departs: Wed, Fri at 9:40am, 11:50am

	Adult	Child 4-11 yrs
Return Shuttle	\$67*	\$61*

*** FROM PRICES ARE A GUIDE ONLY**, subject to change and availability and are in Australian Dollars. Prices are per person, unless otherwise specified and based on travel in low season. For full terms and conditions, refer to the Booking Conditions on the inside back cover of this brochure.

AQUA OASIS



Hotel Room

320 Lewers Street, Honolulu
MAP PAGE 11

From **\$469***[^]

- ❖ All rooms feature private balconies
- ❖ Aloha Steak House Waikiki is open for lunch and dinner
- ❖ Great for families with a guest laundry and rooms with cooking facilities

^Amenity Fee includes light breakfast daily, Wi-Fi, shell lei greeting upon arrival, use of beach chairs and towels and more.

Location: On lively Lewers Street, this property is only a short stroll to great shopping and dining. Distances: Beach 600m, Royal Hawaiian Center 100m.

Property Features: Pool, Karaoke bar, Sauna, Laundry/dry cleaning service, 24 hour reception, Valet parking (extra charge), 96 rooms.

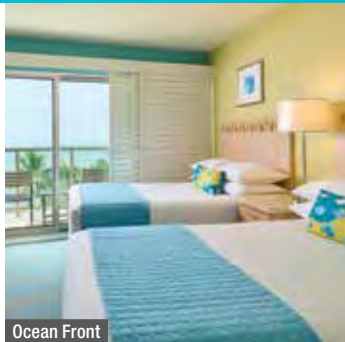
Room Features: Air-conditioning, Balcony, Limited cooking facilities (except Hotel Room), Cable TV, Ironing facilities, Hair dryer.

Max Capacity: Hotel Room/Junior Suite – 4, Junior Suite with Kitchenette/1 Bedroom Suite with Kitchenette – 5.

^Price includes USD34.21 Amenity Fee per room per day to be paid direct to the hotel by you.



ASTON WAIKIKI CIRCLE HOTEL



Ocean Front

2464 Kalakaua Avenue, Honolulu
MAP PAGE 11

From **\$552***[^]

- ❖ All guest rooms have two double beds
- ❖ Complimentary hula show under the banyan tree three times a week
- ❖ Easy access to shopping, dining and activities

^Amenity Fee includes Wi-Fi, shell lei greeting, use of beach towels, admission for one person to Bishop Museum and Honolulu Museum of Art, and more.

Location: On Kalakaua Avenue and directly across from Waikiki Beach. Distances: Beach across road, International Market Place 400m.

Property Features: Restaurant, Parking (extra charge), 104 rooms.

Room Features: Air-conditioning, Balcony, Tea/coffee making facilities, Cable TV, Docking station, PlayStation 3, Ironing facilities, Hair dryer, Safe.

Max Capacity: Hotel Standard/Partial Ocean View/Ocean View/Ocean Front – 4.

^Price includes USD29.49 Amenity Fee per room per day to be paid direct to the hotel by you.



ASTON AT THE WAIKIKI BANYAN



1 Bedroom Standard

201 Ohua Avenue, Honolulu
MAP PAGE 11

From **\$497***[^]

- ❖ Kids will love the recreation deck with full sized basketball and tennis court, playground and a pool
- ❖ Every suite includes a separate living area and fully equipped kitchen

^Amenity Fee includes Wi-Fi, shell lei greeting, use of beach towels, admission for one person to Bishop Museum and Honolulu Museum of Art, and more.

Location: In close proximity to Kapi'olani Park and Honolulu Zoo. Distances: Beach 400m, International Market Place 800m.

Property Features: Pool (heated), Spa, Café, Barbecue area, Sauna, Tennis court, Children's playground, Guest laundry, 24 hour reception, Parking (extra charge), 876 rooms.

Room Features: Air-conditioning, Balcony, Kitchen, Tea/coffee making facilities, Cable TV, Ironing facilities, Hair dryer, Safe, All rooms non-smoking.

Max Capacity: 1 Bedroom Standard/1 Bedroom Superior City View/1 Bedroom Deluxe Mountain View/1 Bedroom Deluxe Ocean View – 5.

^Price includes USD34.21 Amenity Fee per room per day to be paid direct to the hotel by you.



CASTLE WAIKIKI SHORE



Studio Ocean View

2161 Kalia Road, Honolulu
MAP PAGE 11

From **\$549***[^]

- ❖ Only resort condominium property situated directly on the sands of Waikiki Beach
- ❖ Family friendly and perfect for extended stays

Location: Along the Waikiki beachfront and bordering Fort DeRussy Park, this property is steps away from the shops and restaurants of Waikiki Beach Walk. Distances: Beachfront, Royal Hawaiian Center 450m.

Property Features: Lift, Parking (extra charge), 168 rooms.

Room Features: Free Wi-Fi, Air-conditioning, Balcony, Limited cooking facilities (Studio Ocean View), Kitchen (1 and 2 Bedrooms), Cable TV, Ironing facilities, Washer/dryer, Hair dryer, Safe, All rooms non smoking.

Max Capacity: Studio Ocean View – 2, 1 Bedroom Park View/1 Bedroom Ocean View – 4, 2 Bedroom Ocean View/2 Bedroom Oceanfront – 6.

^Minimum 2 night stay applies. +USD305 (for a Studio Ocean View) Cleaning Fee per stay to be paid directly to the hotel by you. Room servicing during stay is optional (extra charge applies).

O'AHU ACCOMMODATION

OHANA WAIKIKI EAST BY OUTRIGGER



Waikiki View Queen

150 Kaiulani Avenue, Honolulu
MAP PAGE 11

From **\$421** *^

- ❖ Start your day at the Instagrammable Hawaiian Aroma Caffe
- ❖ Surrounded by numerous shopping and dining options
- ❖ Spacious guest rooms and suites with kitchens

^Resort Charge includes Wi-Fi, souvenir drawstring beach bag and more.

Location: Located steps from Waikiki Beach and next door to Waikiki's International Market Place. Distances: Beach 250m, International Market Place 110m.

Property Features: Pool, Restaurants (3), Café, Bar, Gym, Laundry/dry cleaning service, Parking (extra charge), Hair salon, 443 rooms.

Room Features: Air-conditioning, Refrigerator, Limited cooking facilities (except Waikiki Views), Tea/coffee making facilities, 55" Smart TV with Google Chrome, Ironing facilities, Hair dryer, Safe.

Max Capacity: Waikiki View Queen/Pool View Queen/1 Bedroom – 4, Studio Kitchenette – 2, 2 Bedroom – 7. Other room types also available.

^Price includes USD29.49 Resort Charge per room per day to be paid direct to the hotel by you.



ASTON WAIKIKI SUNSET



1 Bedroom Standard

229 Paoakalani Avenue, Honolulu
MAP PAGE 11

From **\$465** *^

- ❖ Recreation deck with a tennis court, barbecue stations and swimming pool
- ❖ Perfect for families with rooms accommodating up to six guests
- ❖ Grocery delivery service available

^Amenity Fee includes Wi-Fi, shell lei greeting, use of beach towels, admission for one person to Bishop Museum and Honolulu Museum of Art, and more.

Location: Only a short walk to Waikiki Beach, Kapi'olani Park and the Honolulu Zoo. Distances: Beach 400m, International Market Place 950m.

Property Features: Pool (heated), Barbecue area, Sauna, Tennis court, Laundry/dry cleaning service, Parking (extra charge), Convenience store, 435 rooms.

Room Features: Air-conditioning, Balcony, Cable TV, Kitchen with microwave, Rice cooker, Tea/coffee making facilities, Ironing facilities, Hair dryer, Safe.

Max Capacity: 1 Bedroom Standard/1 Bedroom Superior/1 Bedroom Deluxe Mountain View/1 Bedroom Partial Ocean View/1 Bedroom Deluxe Ocean View – 4, 2 Bedroom Diamond Head/2 Bedroom Diamond Head Partial Ocean View/2 Bedroom Diamond Head Ocean View/2 Bedroom Penthouse Mountain View – 6.

^Price includes USD35.29 Amenity Fee per room per day to be paid direct to the hotel by you.



WAIKIKI MALIA



Waikiki View

2211 Kuhio Avenue, Honolulu
MAP PAGE 11

From **\$442** *^

- ❖ Conveniently located in Waikiki near the beach, shopping and dining
- ❖ Newly renovated guest rooms in the Malia Tower
- ❖ 1 Bedroom Kitchenette Units are ideal for families

^Resort Charge includes Wi-Fi and souvenir drawstring beach bag.

Location: Less than a 10 minute walk to the International Market Place and Waikiki Beach. Distances: Beach 700m, Royal Hawaiian Center 300m.

Property Features: Pool, Spa, Restaurant, Bar, Gym, Laundry/dry cleaning service, Parking (extra charge), 327 rooms.

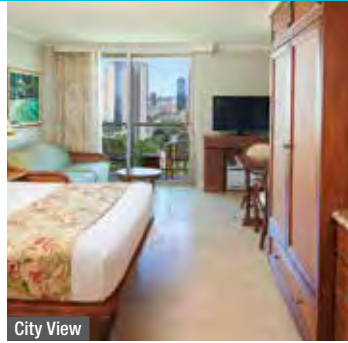
Room Features: Air-conditioning, Balcony, Refrigerator, Limited cooking facilities (1 Bedroom with Kitchenette), Tea/coffee making facilities, 55" Smart TV with Google Chrome, Ironing facilities, Hair dryer, Safe, All rooms non smoking.

Max Capacity: Waikiki View/Partial Ocean View/1 Bedroom with Kitchenette – 4.

^Price includes USD31.85 Resort Charge per room per day to be paid direct to the hotel by you.



LUANA WAIKIKI HOTEL & SUITES



City View

2045 Kalakaua Avenue, Honolulu
MAP PAGE 11

From **\$578***^

- Great for self-catering with cooking facilities in select rooms
- Complimentary Manager's Wine Reception every Monday, Wednesday and Friday from 5pm to 6pm

^Amenity Fee includes Wi-Fi, shell lei greeting, use of beach towels, admission for one person to Bishop Museum and Honolulu Museum of Art, and more.

Location: Overlooking Fort DeRussy Park and a short stroll to the beach, world-class shopping and dining. Distances: Beach 800m, Royal Hawaiian Center 550m.

Property Features: Pool, Sundeck, Restaurant, Gym, Barbecue area, Laundry/dry cleaning service, 24 hour reception, 223 rooms.

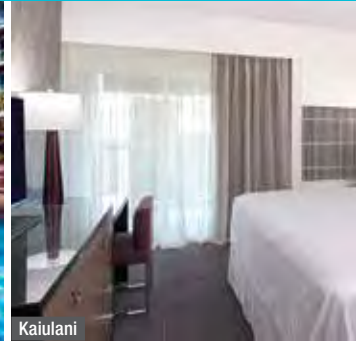
Room Features: Air-conditioning, Balcony, Limited cooking facilities (Studios), Kitchen (1 and 2 Bedrooms), Ironing facilities, Hair dryer, All rooms non smoking.

Max Capacity: City View/Partial Ocean View/Studio Kitchenette/Studio Kitchenette Partial Ocean View, 1 Bedroom City View/1 Bedroom Ocean View – 4, 2 Bedroom City View – 6.

^Price includes USD41.29 Amenity Fee per room per day to be paid direct to the hotel by you.



SHERATON PRINCESS KAIULANI



Kaiulani

120 Kaiulani Avenue, Honolulu
MAP PAGE 11

From **\$740***^

- Te Moana Nui Dinner Show performed three times a week showcasing Polynesian storytelling and entertainment
- Splash Bar is the place for cocktails and live entertainment

^Resort Fee includes Wi-Fi, activities and more.

Location: Just steps from Waikiki Beach as well as shopping and dining options. Distances: Beach 250m, International Market Place 200m.

Property Features: Pool (freshwater), Restaurants (2), Bar, Room service, Gym, Nightly poolside entertainment, Parking (extra charge), 1142 rooms.

Room Features: Air-conditioning, Balcony, Tea/coffee making facilities, Ironing facilities, Hair dryer, Safe.

Max Capacity: Kaiulani/City/Tower City/Princess Pool/Tower Partial Ocean/Tower Skyline Partial Ocean/Tower Ocean/Princess Ocean/Tower Premier Ocean – 4.

^Price includes USD38.93 Resort Fee per room per day to be paid direct to the hotel by you.



EMBASSY SUITES BY HILTON WAIKIKI BEACH WALK



1 Bedroom City Queens

201 Beach Walk, Honolulu
MAP PAGE 11

From **\$746***^

- All suite hotel with spacious one and two bedroom suites
- Evening poolside reception with complimentary cocktails and nibbles
- Open Air Grand Lanai features a pool and cabana rentals

Includes full breakfast daily and evening cocktail reception.

Location: In the heart of Waikiki Beach Walk, this property is surrounded by shopping and dining options. Distances: Beach 300m, Royal Hawaiian Center across road.

Property Features: Pool, Spa, Sundeck, Evening entertainment, Guest laundry, Valet parking (extra charge), 369 rooms.

Room Features: Air-conditioning, Cable TV, Microwave, Tea/coffee making facilities, Ironing facilities, Hair dryer, Safe.

Max Capacity: 1 Bedroom Standard King/1 Bedroom City King/1 Bedroom Ocean View King – 4, 1 Bedroom Standard Queens/1 Bedroom City Queens/1 Bedroom Partial Ocean View Queens/1 Bedroom Ocean View Queens – 5, 2 Bedroom City View – 6.

^Price includes USD41.28 Resort Charge per room per day to be paid direct to the hotel by you.



HYATT CENTRIC WAIKIKI BEACH



City King

349 Seaside Avenue, Honolulu
MAP PAGE 11

From **\$579***^

- Spacious and bright rooms with floor-to-ceiling windows
- Rooftop Splash Lounge with beach lounge chairs, private cabanas and an outdoor fire pit

^Resort Fee includes GoPro rental, International Marketplace discount booklet, two reusable water bottles, use of beach chairs, towels, sunscreen and more.

Location: Right in the heart of Waikiki and close to island-inspired eateries and endless shopping options. Distances: Beach 500m, Royal Hawaiian Center 280m.

Property Features: Pool (splash lounge), Fire pit, 24 hour gym, Dry cleaning service, Lift, 24 hour reception, Non-smoking, Parking (extra charge), 230 rooms.

Room Features: Air-conditioning, Tea/coffee making facilities, Cable TV, Ironing facilities, Hair dryer, Safe.

Max Capacity: City King – 2, Deluxe Mountain/Ocean King/City Suite/Ocean Suite – 3, City Queen/Ocean Queen – 4.

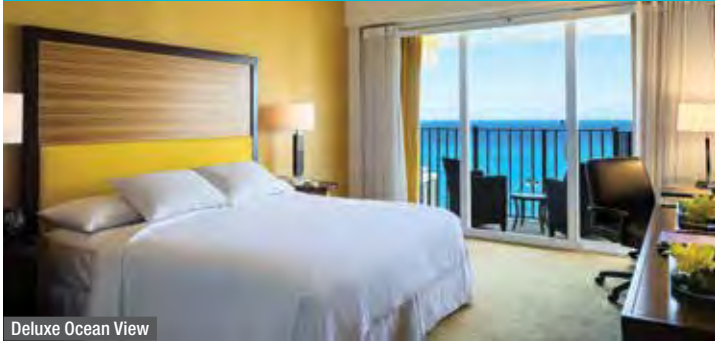
^Price includes USD38.93 Resort Fee per room per day to be paid direct to the hotel by you.



*FROM PRICES ARE A GUIDE ONLY, subject to change and availability and are in Australian Dollars. Prices are per room per night for 2 people, unless otherwise specified and based on the lowest room category for travel in low season. For full terms and conditions, refer to the Booking Conditions on the inside back cover of this brochure.

O'AHU ACCOMMODATION

HILTON WAIKIKI BEACH



Deluxe Ocean View

2500 Kuhio Avenue, Honolulu
MAP PAGE 11

From **\$732**^{*^}

- ❖ Poolside bar and dining at Hang 10 Bar & Grill
- ❖ 24 hour dining, 7 days a week at M.A.C. 24/7 Bar + Restaurant
- ❖ Complimentary poolside cabanas

^Resort Charge includes Wi-Fi, unlimited movies, discount offers, cultural activities and more.

Location: On Kuhio Avenue, only one block to Waikiki Beach and a short walk to shops and restaurants. Distances: Beach 250m, International Market Place 700m.

Property Features: Pool (heated), Spa, Sundeck, Restaurants (2), Bars (3 – including poolside bar), Café, Gym, Laundry/dry cleaning service, Lift, 24 hour reception, Valet parking (extra charge), Resort shop, 601 rooms.

Room Features: Air-conditioning, Balcony, Tea/coffee making facilities, Cable TV, In-room movies (pay to view), Ironing facilities, Hair dryer, Safe, All rooms non smoking.

Max Capacity: City View King – 2, City View Double/Mountain View/Deluxe Mountain View/Deluxe Ocean View/Premium Mountain View/Premium Ocean View – 4.

^Price includes USD41.29 Resort Charge per room per day to be paid direct to the hotel by you.



ILIKAI HOTEL & LUXURY SUITES



Luxury Junior Suite City View

1777 Ala Moana Boulevard, Honolulu
MAP PAGE 11

From **\$743**^{*^}

- ❖ Luxury meets convenience with full sized kitchens and spacious living areas
- ❖ Friday night hula and entertainment show and Sunday night entertainment
- ❖ Iconic oceanfront hotel

^Amenity Fee includes Wi-Fi, shell lei greeting, two bottles of water per day, Bishop and Honolulu Museum of Art admission for one and more.

Location: Set at the gateway to Waikiki overlooking the Ala Wai Yacht Marina. Distances: Beach 450m, Ala Moana Center 850m.

Property Features: Pool (2), Sundeck, Restaurant, Bar, Gym, Laundry/dry cleaning service, 24 hour reception, Parking (extra charge), 1045 rooms.

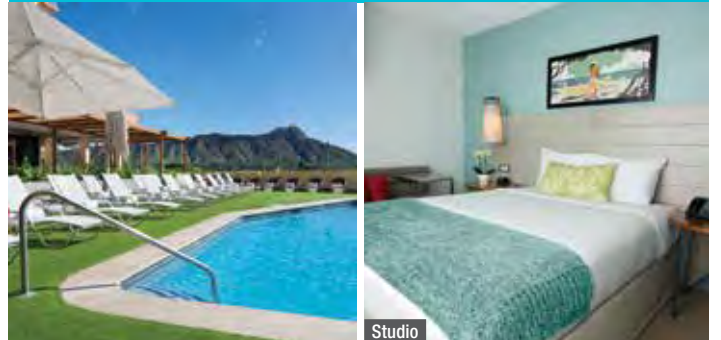
Room Features: Air-conditioning, Balcony, Kitchen, Ironing facilities, Hair dryer.

Max Capacity: Luxury Junior Suite City View/Luxury Junior Suite Courtyard View/Luxury Junior Suite Poolside View/Luxury Junior Suite Partial Ocean View/Luxury Junior Suite Ocean View/Luxury Junior Suite Sunset Ocean View, Luxury 1 Bedroom Boulevard View – 4, Luxury 2 Bedroom City View/Luxury 2 Bedroom Ocean View/Luxury 2 Bedroom Oceanfront View – 6.

^Price includes USD38.93 Amenity Fee per room per day to be paid direct to the hotel by you.



QUEEN KAPI'OLANI HOTEL



Studio

150 Kapahulu Avenue, Honolulu
MAP PAGE 11

From **\$627**^{*^}

- ❖ Weekly cultural activities calendar and live music
- ❖ Unobstructed views of Diamond Head from the pool deck
- ❖ On-site surf school, art gallery and coffee shop

^Amenity Fee includes Wi-Fi, welcome juice, Dole Whip tasting, daily surf demonstrations, beach chairs and towels, Yoga on the go sets and more.

Location: Situated at the edge of Waikiki and opposite the Honolulu Zoo. Distances: Beach 200m, International Market Place 1km.

Property Features: Pool, Restaurants (2), Bar, Room Service, Gym, Laundry/dry cleaning service, Non smoking, Valet parking (extra charge), 315 rooms.

Room Features: Air-conditioning, Limited cooking facilities (Junior Suite), Ironing facilities, Hair dryer, Safe.

Max Capacity: Studio – 2, Junior Suite – 3, City View/Diamond Head View/Ocean View – 4.

^Price includes USD53.08 Amenity Fee per room per day to be paid direct to the hotel by you.

OUTRIGGER WAIKIKI BEACHCOMBER HOTEL



Waikiki View King

2300 Kalakaua Avenue, Honolulu
MAP PAGE 11

From **\$537***^

- ❖ Home to the Maui Brewing Co. restaurant
- ❖ Hawaiian grown Kona coffee at the photo-worthy Hawaiian Aroma Caffè
- ❖ Spacious and stylish rooms feature décor by local Hawaiian artists

^Resort Charge includes Wi-Fi access, drawstring beach bag, exclusive shopping discounts and more.

Location: In the heart of Waikiki along Kalakaua Avenue and close to shopping and dining options. Distances: Beach 200m, International Market Place 10m.

Property Features: Pool (outdoor), Sundeck, Pool bar, Restaurant, Gym, Guest laundry, Valet parking (extra charge), 498 rooms.

Room Features: Air-conditioning, Balcony, Refrigerator, Tea/coffee making facilities, 55" smart TV with Google Chrome, Bluetooth speakers, USB charging station, Ironing facilities, Hair dryer, Safe.

Max Capacity: Waikiki View King/Partial Ocean View King/Ocean View King/Deluxe Ocean View King – 3, Waikiki View Double/Partial Ocean View Double/Ocean View Double/Deluxe Ocean View Double/1 Bedroom Ocean View Suite – 4, Junior Suite – 5.

^Price includes USD47.18 Resort Charge per room per day to be paid direct to the hotel by you.



OUTRIGGER WAIKIKI BEACH RESORT



City View

2335 Kalakaua Avenue, Honolulu
MAP PAGE 11

From **\$752***^

- ❖ Home to famous Duke's Waikiki
- ❖ Beachfront pool and deck, great for soaking up the warm Hawaiian sun
- ❖ Voyager 47 Club Lounge includes daily breakfast and evening appetisers

^Resort Charge includes Wi-Fi access, daily cultural activities, recyclable water bottles, tote bag, and more.

Location: Occupying a prime location on the widest stretch of iconic Waikiki Beach. Distances: Beachfront, International Market Place across road.

Property Features: Pool, Spa, Restaurants (2), Café, Bars (2), Day spa, Gym, Voyager 47 Club Lounge (Club rooms and Club suites), Laundry/dry cleaning service, Valet parking (extra charge), 524 rooms.

Room Features: Air-conditioning, Balcony, Tea/coffee making facilities, Cable TV, Bathrobes and slippers, Hair dryer, Safe.

Max Capacity: City View/Partial Ocean View/Ocean View/Ocean Front/1 Bedroom Ocean Front Suite – 4. Club rooms and Club suites also available.

^Price includes USD53.08 Resort Charge per room per day to be paid direct to the hotel by you.



Voyager 47 Club Lounge



*FROM PRICES ARE A GUIDE ONLY, subject to change and availability and are in Australian Dollars. Prices are per room per night for 2 people, unless otherwise specified and based on the lowest room category for travel in low season. For full terms and conditions, refer to the Booking Conditions on the inside back cover of this brochure.

O'AHU ACCOMMODATION

PRINCE WAIKIKI



Ocean View

100 Holomoana Street, Honolulu
MAP PAGE 11

From **\$744** ^{**^}

- ❖ All rooms feature large floor-to-ceiling windows with ocean views
 - ❖ Watch the sun set from the Infinity pool deck
 - ❖ Shuttle service to Waikiki, Hawaii Prince Golf Club and the Ala Moana Center
- ^Resort Charge includes Wi-Fi, two bottles of water, 20% off golf at Hawaii Prince Golf Club, round-trip shuttle to Hawaii Prince Golf Club, eco shopping bag and more.**

Location: Overlooking the Ala Wai Boat Harbor and perfectly positioned for shopping and dining of the Ala Moana Center. Distances: Beach 800m, Ala Moana Center 750m.

Property Features: Pool (infinity), Spa, Cabanas (extra charge), Poolside day bed (extra charge), Restaurants (3), 24 hour room service, Bars (2), Gym, Hula lessons, Golf course (27 holes), Massage facilities, Laundry/dry cleaning service, 24 hour reception, Valet parking (extra charge), 563 rooms.

Room Features: Ocean views, Air-conditioning, Tea/coffee making facilities, Ironing facilities, Bathrobes and slippers, Hair dryer, Safe, All rooms non smoking.

Max Capacity: Ocean View – 3 adults or 2 adults/2 children. Other room types also available.

^Price includes USD53.08 Resort Charge per room per day to be paid direct to the hotel by you.



REGENCY ON BEACHWALK WAIKIKI BY OUTRIGGER



1 Bedroom City View

255 Beach Walk, Honolulu
MAP PAGE 11

From **\$722** ^{**^^}

- ❖ Great for families with a full kitchen and separate living area in each apartment
- ❖ Spacious, tiled lanais with city or partial ocean views
- ❖ Close to multiple dining options along the Waikiki Beach Walk

Location: Set on Waikiki Beach Walk and close to the enticing restaurants and shops of Kalakaua Avenue. Distances: Beach 400m, Royal Hawaiian Center 350m.

Property Features: Restaurants (3), Guest laundry, Parking (extra charge), Convenience store, 48 rooms.

Room Features: Air-conditioning, Balcony, Kitchen, Tea/coffee making facilities, Cable TV, Ironing facilities, Hair dryer, Safe.

Max Capacity: 1 Bedroom City View/1 Bedroom Partial Ocean View – 4, 2 Bedroom City View/2 Bedroom Partial Ocean View – 6.

^Minimum 2 night stay applies. +USD332.12 (for 1 Bedrooms) Cleaning Fee plus a USD90.78 Mandatory Damage Protection charge per stay to be paid directly to the hotel by you. Room servicing during stay is optional (extra charge applies).



WAIKIKI BEACH MARRIOTT RESORT & SPA



2552 Kalakaua Avenue, Honolulu
MAP PAGE 11

From **\$859** ^{**^}

- ❖ Kuhio Beach Grill is the place for sunset views
 - ❖ Array of services and AVEDA treatments at the day spa
 - ❖ Upgrade to an Ocean View or Ocean Front room for great views of Waikiki
- ^Resort Fee includes Wi-Fi, daily cultural and fitness classes and more.**

Location: Just steps from the Pacific Ocean and close to dining options. Distances: Beach across road, International Market Place 650m.

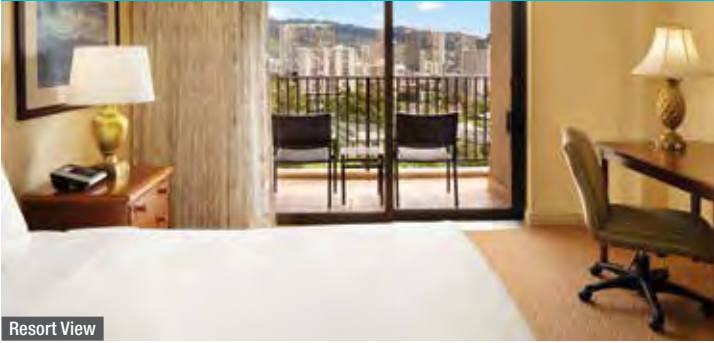
Property Features: Pool, Spa, Restaurants (5), Café, Day spa, Gym, Diving and watersports centre, Valet parking (extra charge), Resort shops, 1175 rooms.

Room Features: Air-conditioning, Tea/coffee making facilities, Ironing facilities, Hair dryer, Safe.

Max Capacity: City View/Ocean View/Ocean View Premium/Diamond Head Ocean View/Ocean Front – 4.

^Price includes USD58.98 Resort Fee per room per day to be paid direct to the hotel by you.

HILTON HAWAIIAN VILLAGE WAIKIKI BEACH RESORT



Resort View

2005 Kalia Road, Honolulu
MAP PAGE 11

From **\$1003***^

- ❖ Multiple dining options with over 18 restaurants and bars
 - ❖ Five swimming pools, one with a waterslide, and a large saltwater lagoon
 - ❖ Weekly Friday night fireworks show
- ^Resort Charge includes Wi-Fi access, daily cultural activities, outdoor movies (Wednesday evenings), DVD movies and fitness classes.**

Location: Within walking distance to shops, Kalakaua Avenue and Waikiki Beach Walk. Distances: Beachfront, Ala Moana Center 1.1km.

Property Features: Friday night fireworks, Waikiki Starlight Luau, Pools (5), Restaurants and bars (20), Day spa, Fitness centre, Shops (90), 2860 rooms.

Room Features: Air-conditioning, Balcony, Cable TV, Tea/coffee making facilities, Ironing facilities, Hair dryer, Safe.

Max Capacity: Resort View Diamond Head Tower/Partial Ocean View/Ocean View – 4, Rainbow Tower: Marina Ocean View/Ocean Front – 4. Other room types also available.

^Price includes USD58.98 Resort Charge per room per day to be paid direct to the hotel by you.



HYATT REGENCY WAIKIKI BEACH RESORT & SPA



Ocean Front King

2424 Kalakaua Avenue, Honolulu
MAP PAGE 11

From **\$940***^

- ❖ Highly acclaimed Na Ho'ola Spa
- ❖ More than 60 boutiques within the resort
- ❖ Pool deck with ocean views and cabanas

^Resort Fee includes reusable water bottles, 60 minutes of international telephone calls per day, and discounts.

Location: Directly on Kalakaua Avenue, across the road from Waikiki Beach. Distances: International Market Place 250m.

Property Features: Cultural activities, Farmers Market, Pool, Restaurants (5), Bar, Fitness centre, Day spa, Laundry/dry cleaning service, Parking (extra charge), Resort shops, 1230 rooms.

Room Features: Air-conditioning, Balcony, Tea/coffee making facilities, Cable TV, Docking station, Ironing facilities, Hair dryer, Safe.

Max Capacity: Waikiki City View King/Ocean Front King – 3, Waikiki City View Queen/Ocean View/Ocean Front Queen/Family Ocean Front Suite/Waikiki View Club Access/Oceanfront Club Access – 4.

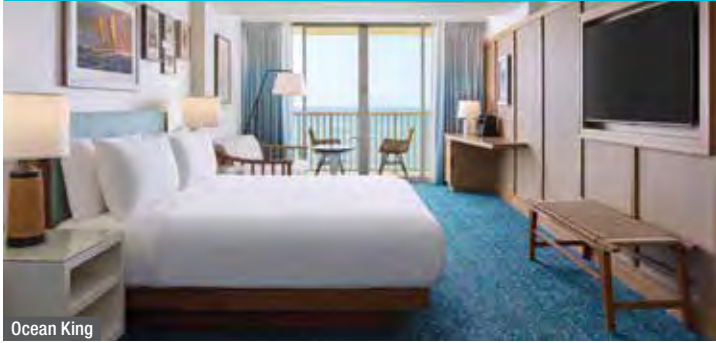
^Price includes USD49.54 Resort Fee per room per day to be paid direct to the hotel by you.



*FROM PRICES ARE A GUIDE ONLY, subject to change and availability and are in Australian Dollars. Prices are per room per night for 2 people, unless otherwise specified and based on the lowest room category for travel in low season. For full terms and conditions, refer to the Booking Conditions on the inside back cover of this brochure.

O'AHU ACCOMMODATION

OUTRIGGER REEF WAIKIKI BEACH RESORT



Ocean King

2169 Kalia Road, Honolulu
MAP PAGE 11

From **\$736**^{*^}

- ❖ One of only eight beachfront properties in Waikiki
- ❖ Enjoy Hawaiian music nightly at Kani Ka Pila Grille
- ❖ Voyager 47 Club Lounge includes daily breakfast and evening appetisers

^Resort Charge includes Wi-Fi access, two reusable water bottles, daily cultural activities and more.

Location: On one of the most coveted stretches of Waikiki Beach and close to the shopping and dining options of Waikiki Beach Walk. Distances: Beachfront, Royal Hawaiian Center 300m.

Property Features: Pool, Spas (3), Private cabana (extra charge), Restaurants (2), Café, Bars (2), Day spa, Gym, Voyager 47 Club Lounge (Club rooms and Club suites), Laundry/dry cleaning service, Valet parking (extra charge), 658 rooms.

Room Features: Air-conditioning, Balcony (except Standard), Refrigerator, Tea/coffee making facilities, Smart TV, Bluetooth speakers & USB charging station.

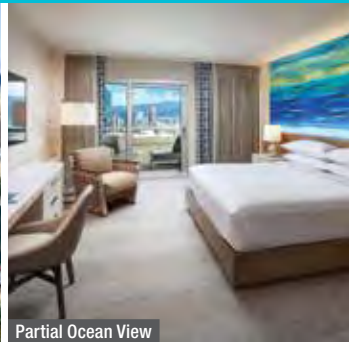
Max Capacity: City View King/City Double/Standard/Partial Ocean King/Partial Ocean Double/Ocean King – 4. Other rooms, Club rooms and Club suites also available.

^Price includes USD53.08 Resort Charge per room per day to be paid direct to the hotel by you.



Voyager 47 Club Lounge

SHERATON WAIKIKI



Partial Ocean View

2255 Kalakaua Avenue, Honolulu
MAP PAGE 11

From **\$1212**^{*^}

- ❖ Adults only oceanfront infinity pool and family friendly Helumoa Playground Pool with a waterslide
- ❖ Enjoy panoramic ocean views at RumFire restaurant

^Resort Fee includes Wi-Fi, daily cultural activities and more.

Location: Set on one of the best stretches of Waikiki Beach. Distances: Beachfront, Royal Hawaiian Center 150m.

Property Features: Nightly poolside entertainment, Pools (2 – including adults only infinity), Spa, Waterslide, Restaurants (2), Bars (2), Café, Room service, Gym, Guest laundry, Parking (extra charge), Leahi Club Lounge (extra charge), Boutique, 1636 rooms.

Room Features: Air-conditioning, Balcony, Tea/coffee making facilities, Cable TV, In-room movies (pay to view), Hair dryer, Ironing facilities, Safe.

Max Capacity: Mountain View/Partial Ocean View/Ocean Front/Deluxe Ocean Front – 4, Malia Ocean Front Suite – 5, Large Luxury Ocean/Kai Ocean Front Suite – 6.

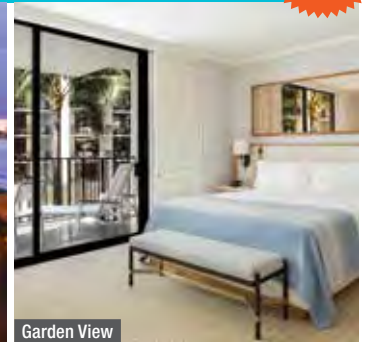
^Price includes USD41.83 Resort Fee per room per night to be paid directly to the hotel by you.



HALEKULANI



NO RESORT FEE



Garden View

2199 Kalia Road, Honolulu
MAP PAGE 11

From **\$1274**^{*}

- ❖ A beachfront location with views of Diamond Head
- ❖ Multiple dining options including the highly acclaimed La Mer restaurant
- ❖ Free surfing or stand-up paddle board demonstration daily

Location: A prime location on five oceanfront acres. Distances: Beachfront, Royal Hawaiian Center 250m.

Property Features: Pool, Restaurants (3), Bars (3), Day spa, Gym, Laundry/dry cleaning service, Lift, 24 hour reception, Valet parking (extra charge), Resort shop, 453 rooms.

Room Features: Air-conditioning, Balcony, Cable TV, DVD player, Ironing facilities, Bathrobes, Hair dryer, Safe, All rooms non smoking.

Max Capacity: Garden View/Partial Ocean View/Ocean View/Ocean Front/Diamond Head Ocean Front – 3.



MOANA SURFRIDER, A WESTIN RESORT & SPA



Historic Banyan

2365 Kalakaua Avenue, Honolulu
MAP PAGE 11

From **\$1090** ^{**^}

- ❖ Beachfront property with sun lounges on the beach
 - ❖ Historic hotel dating back to 1901 with classic Victorian architecture
 - ❖ Oceanfront Moana Lani Spa
- ^Resort Charge includes Wi-Fi access, daily cultural activities and more.

Location: In the heart of Waikiki, directly on Waikiki Beach and surrounded by shopping and dining options. Distances: Beachfront, International Market Place 110m.

Property Features: Hawaiian activities, Pool, Private beach area, Restaurants (5), Bar, Room service, Moana Lani Spa, Gym, Beach club (extra charge), Laundry/dry cleaning service, 24 hour reception, Parking (extra charge), 791 rooms.

Room Features: Air-conditioning, Balcony (except Diamond City, Historic Banyan), Tea/coffee making facilities, In-room movies (pay to view), Ironing facilities, Hair dryer, Safe.

Max Capacity: Historic Banyan/Diamond City/Historic Banyan Ocean – 2, Tower City/Tower Partial Ocean/Diamond Ocean Front/Tower Ocean/Tower Premier Ocean/Penthouse Skyline/Penthouse Ocean/Tower Ocean Front Suite – 4.

^Price includes USD49.54 Resort charge per room per day to be paid direct to the hotel by you.



THE RITZ-CARLTON RESIDENCES



Ocean View Studio

383 Kalaimoku Street, Honolulu
MAP PAGE 11

From **\$1798** ^{**}

- ❖ Acclaimed dining options including Dean & DeLuca and Sushi Sho
- ❖ Infinity pool on the eighth floor is the highest in Waikiki
- ❖ All residences feature ocean views, kitchens, washing machines and dryers

Location: Close to Waikiki Beach and fronted by Luxury Row shopping. Distances: Beach 600m, Royal Hawaiian Center 350m.

Property Features: Pool (infinity), Cabanas (extra charge), Sundeck, Restaurants (3), Bar, Café, 24 hour room service, The Ritz-Carlton Spa, Massage facilities, Steam room, Sauna, Laundry/dry cleaning service, Non smoking, 24 hour reception, 552 rooms.

Room Features: Ocean views, Balcony, Air-conditioning, Limited cooking facilities (Studios), Kitchen with microwave and dishwasher (except Studios), Tea/coffee making facilities, Coffee pod machine, Bathrobes, Hair dryer, Ironing facilities, Washer/dryer.

Max Capacity: Ocean View Studio/Deluxe Ocean View Studio/1 Bedroom Deluxe Ocean View/1 Bedroom Superior Ocean View – 3, 2 Bedroom Deluxe Ocean View – 5, 3 Bedroom Premier Ocean View – 7. Other room types also available.



3 Bedroom Premier Ocean View



NO RESORT FEE

*FROM PRICES ARE A GUIDE ONLY, subject to change and availability and are in Australian Dollars. Prices are per room per night for 2 people, unless otherwise specified and based on the lowest room category for travel in low season. For full terms and conditions, refer to the Booking Conditions on the inside back cover of this brochure.

O'AHU ACCOMMODATION

THE ROYAL HAWAIIAN, A LUXURY COLLECTION RESORT



Historic

2259 Kalakaua Avenue, Honolulu
MAP PAGE 11

From **\$1408***^

- ❖ Iconic hotel known as the 'Pink Palace of the Pacific'
 - ❖ Absolute beachfront location with private cabanas
 - ❖ Stay in the exclusive Mailani Tower for private check-in and club lounge access
- ^Resort Charge includes Wi-Fi, daily cultural activities and more.

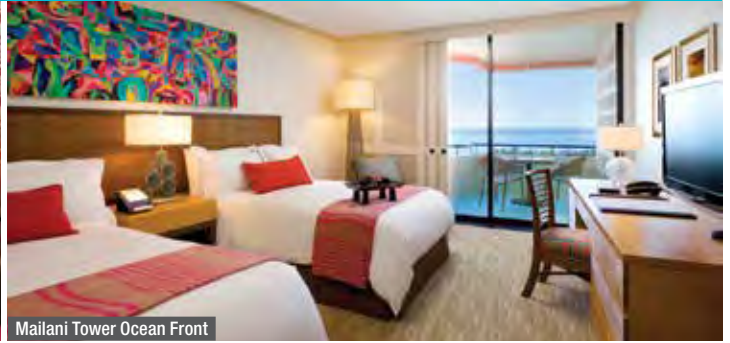
Location: With an oceanfront location this resort provides great access to Waikiki's range of shopping, dining and activities. Distances: Beachfront, Royal Hawaiian Center 160m.

Property Features: Cultural Hawaiian activities (extra charge), Pools (2), Royal Beach Club, Restaurants (2), Bar, Café, 24 hour room service, Abhasa Spa, Gym, Laundry/dry cleaning service, Lifts, 24 hour reception, Parking (extra charge), 528 rooms.

Room Features: Air-conditioning, Balcony (Mailani Tower rooms), Tea/coffee making facilities, Cable TV, In-room movies (pay to view), Docking station, Ironing facilities, Hair dryer, Safe.

Max Capacity: Historic/Mailani Tower Ocean Front – 4, Historic Garden Junior Suite – 3. Other room types also available.

^Price includes USD49.54 Resort Charge per room per day to be paid direct to the hotel by you.



Mailani Tower Ocean Front



TRUMP INTERNATIONAL HOTEL WAIKIKI



Superior City View

223 Saratoga Road, Honolulu
MAP PAGE 11

From **\$771***^

- ❖ Great for families or friends with all rooms featuring kitchen facilities and some accommodating up to eight guests
- ❖ Sixth floor infinity pool with expansive sun deck

^Resort Charge includes eco-friendly water bottles and tote bag, daily refreshments at the Infinity Pool, use of beach toys and more.

Location: A two minute stroll to Waikiki Beach and close to exclusive boutiques and eclectic restaurants. Distances: Beach 100m, Royal Hawaiian Center 400m.

Property Features: Pool (infinity), Spa, Restaurants (3), Bar, Café, Poolside dining, 24 hour room service, The Spa at Trump (day spa), Library, Gym, 462 rooms.

Room Features: Air-conditioning, Balcony (except Superior), Limited cooking facilities with microwave (Superior & Deluxe), Kitchen (1, 2, 3 Bedrooms), Tea/coffee making facilities, DVD player, Docking station, In-room movies (pay to view), Ironing facilities, Washer/dryer (Deluxe, 1, 2, 3 Bedrooms), Bathrobes, Hair dryer, Safe.

Max Capacity: Superior City View/Superior Partial Ocean View/Superior Ocean View – 2. Deluxe 1 Bedroom City View Suite – 4. Other room types also available.

^Price includes USD47.18 Resort Charge per room per day to be paid direct to the hotel by you.



Deluxe 1 Bedroom City View Suite



*FROM PRICES ARE A GUIDE ONLY, subject to change and availability and are in Australian Dollars. Prices are per room per night for 2 people, unless otherwise specified and based on the lowest room category for travel in low season. For full terms and conditions, refer to the Booking Conditions on the inside back cover of this brochure.

COURTYARD BY MARRIOTT OAHU NORTH SHORE



NO RESORT FEE



Standard Queen Queen

55-400 Kamehameha Highway, Laie
MAP PAGE 11

From **\$930***

- ❖ Oversized and connecting rooms are great for families
- ❖ Complimentary on-site cultural and recreational activities
- ❖ No resort or destination fees

Location: Steps to the beach, adjacent to Polynesian Cultural Center Distances: Beach 20m, Kahuku town centre 5.5km, Waikiki 55km.

Property Features: Pool, Restaurant, Gym, Beach Activity centre, Cultural Classes, Alcohol-free zones, Laundry/dry cleaning service, Non smoking, Parking (extra charge), 144 rooms.

Room Features: Air-conditioning, Tea/coffee making facilities, Mini fridge, Smart TV, Ironing facilities, Hair dryer.

Max Capacity: Standard Queen Queen – 4, Deluxe – 5.



TURTLE BAY RESORT, NORTH SHORE



Resort View King

57-091 Kamehameha Highway, Kahuku
MAP PAGE 11

From **\$1543**^**

- ❖ Situated on eight kilometres of unspoiled coastline
- ❖ Kids will enjoy the 25 metre waterslide and children's pool
- ❖ Spa with massage rooms overlooking the ocean

^Resort Fee includes Wi-Fi, arrival lei greeting, two refillable PATH water bottles, resort activities, beach toys and more.

Location: Occupying a beachfront location on O'ahu's North Shore and only a 55 minute drive from Honolulu. Distances: Beachfront, Kahuku town centre 6km, Waikiki 70km.

Property Features: Pools (2), Restaurants (5), Bars (2), Day Spa, Gym, Tennis court, Laundry/dry cleaning service, Valet parking (extra charge), 452 rooms.

Room Features: Air-conditioning, Kitchen (Ocean Villa 3 Bedroom), Tea/coffee making facilities, Ironing facilities, Washer/dryer (Ocean Villa 3 Bedroom), Hair dryer.

Max Capacity: Resort View King/Ocean View King/Vista Level Ocean View King – 3, Resort View 2 Queens/Ocean View 2 Queens/Vista Level Ocean View 2 Queens/Ocean Family Suite/Ocean View Junior King Suite/Ocean Beachfront Cottage 2 Queens – 4, Ocean Beachfront King Cottage – 2, Ocean Villa 3 Bedroom – 8.

^Price includes USD57.80 Resort Fee per room per day to be paid direct to the hotel by you.



*FROM PRICES ARE A GUIDE ONLY, subject to change and availability and are in Australian Dollars. Prices are per room per night for 2 people, unless otherwise specified and based on the lowest room category for travel in low season. For full terms and conditions, refer to the Booking Conditions on the inside back cover of this brochure.

MAUI

Maui is known for its pristine beaches, lush rainforests, spectacular volcanic craters and charming historic towns. Beautiful Ka'anapali and Wailea beaches are the perfect places to swim and enjoy the warm Hawaiian sun.

SEE

- Look out for Humpback whales off the West and South Coasts between December and May
- Watch the sunrise from the summit of the dormant volcano, Haleakala

DO

- Soak up the sun at Makena Beach
- Snorkel at Black Rock located at the northern end of Ka'anapali Beach

EAT & DRINK

- Try a locally brewed beer at Maui Brewing Co. in Lahaina
- Travel upcountry to Kula for a gourmet farm-to-plate experience at O'o Farm
- For toes-in-the-sand dining, visit Hula Grill

WHAT'S ON

Maui Marathon

21 April



Oneloa Beach



REF.	APARTMENTS	PAGE
1	Aston at The Whaler on Kaanapali Beach	26
1	Aston Kaanapali Shores	26
2	Honua Kai Resort & Spa	26
3	Palms at Wailea Maui	25
2	Royal Kahana Maui by Outrigger	25

REF.	HOTELS	PAGE
3	Andaz Maui at Wailea Resort	26
3	Fairmont Kea Lani Maui	27
1	Hyatt Regency Maui Resort & Spa	27
1	Outrigger Ka'anapali Beach Resort	25
1	The Westin Maui Resort & Spa	27



AIRPORT TRANSFERS

Get your holiday off to a great start with a door-to-door shared coach transfer service.

Convenient transfers are available 24 hours a day, 7 days a week from Kahului Airport to Ka'anapali, Lahaina and Wailea accommodation. Sit back, relax and be transferred in air-conditioned comfort.

Approximate travel distance from Kahului Airport to Ka'anapali is 45 kilometres, Lahaina 40 kilometres and Wailea 30 kilometres.

Coch Transfer Per Person	Adult/Child
Wailea accommodation	\$96*^A
Lahaina accommodation	\$120*^A
Ka'anapali accommodation	\$161*^A
Private Transfer Per Vehicle	1 to 5 People
Wailea accommodation	\$399*^A
Lahaina accommodation	\$446*^A
Ka'anapali accommodation	\$446*^A

^A Price based on one way to/from Kahului Airport. Children 0 to 3 yrs are free when they do not occupy a seat.



HEAVENLY HANA

Travel along the famous Hana Coast, weaving through the lush tropical rainforest, there are more than 600 curves & 59 one-lane bridges with stunning vistas, cascading waterfalls, and scenic coastal scenery. Visit Keanae Valley Lookout for magnificent views of Maui and the picturesque Wai'anapanapa State Park. See the powerful waves of Ho'okipa Beach, famous for its surfing competitions. It's more about the journey rather than the destination on the Road to Hāna, so sit back, relax and enjoy the view.

Includes:

- Picnic lunch
- Experienced driver/guide with expert commentary
- Return transfers from Maui accommodation

Duration: 10 hours

Departs: Tue, Fri and Sun from Maui at 7am

	Adult	Child 4-11 yrs
Full Day Tour	\$453*	\$319*

OUTRIGGER KA'ANAPALI BEACH RESORT



Premium Garden View

2525 Ka'anapali Parkway, Ka'anapali
MAP PAGE 24

From **\$680***^{^^}

- ❖ Free cultural activities daily including lei making, hula and ukulele lessons
- ❖ Maui Brewing Co, a beloved local brand with a deep island heritage is the primary Beachfront restaurant

Location: Set along Maui's renowned Ka'anapali Beach and five kilometres from the township of Lahaina. Distances: Beachfront, Whalers Village shopping centre 350m.

Property Features: Cultural activities, Pool, Courtyard, Restaurants (2), Grab and go outlet, Ocean Activities Center, Laundry/dry cleaning service, 24 hour reception, Parking (extra charge), 432 rooms.

Room Features: Air-conditioning, Fan, Balcony, Tea/coffee making facilities, Ironing facilities, Hair dryer, Safe (extra charge).

Max Capacity: Courtyard View/Ocean View/Ocean Front/Premium Garden View/Premium Partial Ocean View/Premium Ocean View – 4. Other room types also available.

^{^^}Minimum 2 night stay applies.



PALMS AT WAILEA MAUI



3200 Wailea Alanui, Wailea
MAP PAGE 24

From **\$962***^{^^}

- ❖ One and two bedroom villas with spacious kitchen and barbecue
- ❖ Great for longer stays with washing machines and dryers in each villa
- ❖ Large pool with sun lounges and a hot tub

Location: Situated on a scenic bluff, only a five minute drive from Mōkapu Beach Park. Distances: Beach 1.5km, The Shops at Wailea 1.6km.

Property Features: Pool, Spa, Sundeck, Parking (free), 150 rooms.

Room Features: Air-conditioning (master bedroom only), Balcony, Barbecue, Kitchen with microwave, Tea/coffee making facilities, Cable TV, DVD player, Ironing facilities, Washer/dryer, Hair dryer, Safe, All rooms non smoking.

Max Capacity: 1 Bedroom Garden/1 Bedroom Garden Deluxe/1 Bedroom Ocean – 4, 2 Bedroom Garden/2 Bedroom Garden Deluxe/2 Bedroom Ocean – 6.

^{^^}Minimum 2 night stay applies. ⁺USD311.41 (for 1 bedroom) Mandatory Departure Cleaning Fee per stay to be paid directly to the hotel by you. Room servicing during stay is optional (extra charge applies) plus a USD69.58 Mandatory Damage Protection charge per stay to be paid directly to the hotel by you. Room servicing during stay is optional (extra charge applies).



ROYAL KAHANA MAUI BY OUTRIGGER



Ocean View Studio

4365 Lower Honoapiilani Road, Lahaina
MAP PAGE 24

From **\$694***^{^^}

- ❖ Spacious units are perfect for families and long stays with fully equipped kitchens and a washer/dryer
- ❖ Free parking

Location: A perfect oceanfront location, between the resort areas of Ka'anapali and Kapalua. Distances: Beachfront, Whalers Village shopping centre 300m.

Property Features: Pool, Sundeck, Gym, Parking (extra charge), 236 rooms.

Room Features: Air-conditioning, Balcony, Kitchen with microwave, Tea/coffee making facilities, Cable TV, Ironing facilities, Washer/dryer, Hair dryer, Safe, All rooms non smoking.

Max Capacity: Garden View Studio/Ocean View Studio – 3, 1 Bedroom Garden View/1 Bedroom Ocean View/1 Bedroom Ocean Front – 4, 2 Bedroom Garden View/2 Bedroom Ocean View/2 Bedroom Ocean Front – 6.

^{^^}Minimum 2 night stay applies. ⁺USD252.43 (for Studios) Mandatory Departure Cleaning Fee per stay to be paid directly to the hotel by you. Room servicing during stay is optional (extra charge applies). plus a USD69.58 Mandatory Damage Protection charge per stay to be paid directly to the hotel by you. Room servicing during stay is optional (extra charge applies).



*FROM PRICES ARE A GUIDE ONLY, subject to change and availability and are in Australian Dollars. Prices are per room per night for 2 people, unless otherwise specified and based on the lowest room category for travel in low season. For full terms and conditions, refer to the Booking Conditions on the inside back cover of this brochure.

MAUI ACCOMMODATION

ASTON AT THE WHALER ON KAAPALI BEACH



2481 Kaanapali Parkway, Lahaina
MAP PAGE 24

From **\$896** ^{**^}

- ◆ Apartment-style accommodation with full kitchen facilities
- ◆ Complimentary tea and coffee daily and fresh cut Maui pineapple upon arrival
- ◆ Oceanfront pool

^Amenity Fee includes Wi-Fi access, welcome amenity on arrival, use of beach towels, pool cabanas and tennis court.

Location: Enjoying a beachfront location along Ka'anapali Beach and next door to the Honokowai Marketplace, which includes a supermarket, shops and dining. Distances: Beachfront, Whalers Village shopping centre 400m.

Property Features: Pool, Spa, Barbecue area, Gym, Sauna, Tennis court, Guest laundry, Parking (free), 359 rooms.

Room Features: Air-conditioning, Balcony, Kitchen, Cable TV, DVD player, Ironing facilities, Hair dryer, All rooms non smoking.

Max Capacity: Studio Garden/Studio Ocean – 3, 1 Bedroom Garden/1 Bedroom Ocean – 4, 1 Bedroom Oceanfront – 2, 2 Bedroom Garden/2 Bedroom Ocean – 6.

^Price includes USD29.49 Amenity Fee per room per day to be paid direct to the hotel by you.

ASTON KAAPALI SHORES



3445 Lower Honoapiilani Road, Ka'anapali
MAP PAGE 24

From **\$776** ^{**^}

- ◆ Apartment-style accommodation with cooking and laundry facilities
- ◆ Family friendly with activities for the kids year round at Camp Kaanapali
- ◆ Complimentary hula, ukulele and introductory scuba lessons

^Amenity Fee includes Wi-Fi access, DVD and PlayStation 3 games hire, gym discount, daily newspaper and local telephone calls.

Location: An oceanfront location on Ka'anapali Beach in West Maui. Distances: Beachfront, Whalers Village shopping centre 4.4km.

Property Features: Pools (2), Spas (2), Restaurant, Bar, Kids club 5-12 years (extra charge), Day spa, Gym (extra charge), Tennis courts (2), 463 rooms.

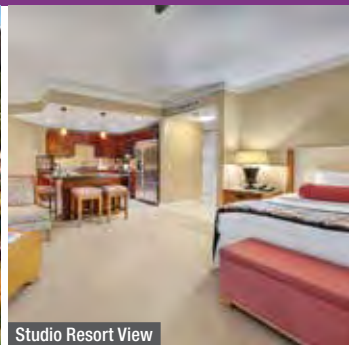
Room Features: Air-conditioning, Balcony (except Hotel), Kitchen with microwave and dishwasher (except Hotel), Tea/coffee making facilities, TV, Washer/dryer (1 and 2 Bedrooms), Hair dryer, Safe.

Max Capacity: Hotel – 2, Studio with Kitchen – 3, 1 Bedroom Standard/1 Bedroom Garden View/1 Bedroom Ocean View – 5. Other room types also available.

^Minimum 2 night stay applies. Price includes USD23.59 Amenity Fee per room per day to be paid direct to the hotel by you.



HONUAI KAI RESORT & SPA



Studio Resort View

130 Kai Malina Parkway, Lahaina
MAP PAGE 24

From **\$1323** ^{**^^}

- ◆ Great for families or large groups with rooms catering for up to eight guests
- ◆ Aquatic playground with four pools, a waterslide, waterfalls and fountains
- ◆ Two restaurants catering for breakfast, lunch and dinner

^Resort Fee includes Wi-Fi access, suite starter kit, self and valet parking and local telephone calls.

Location: Spread across 38 beachfront acres, this property is set between the Pacific Ocean and the West Maui Mountains. Distances: Beachfront, Whalers Village shopping centre 3.7km.

Property Features: Pool (infinity), Spas (5), Waterslide, Restaurants (2), Bar, Day spa, Gym, 600 rooms.

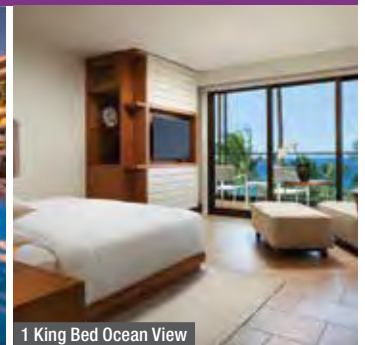
Room Features: Balcony, Kitchen with microwave and dishwasher, Ironing facilities, Washer/dryer.

Max Capacity: Studio Resort View/Studio Partial Ocean/Studio Ocean/1 Bedroom Suite – 4, 2 Bedroom – 6, 3 Bedroom – 8.

^Price includes USD41.28 Resort Fee per room per day to be paid direct to the hotel by you.

+ USD93.18 Mandatory Damage Protection charge per stay to be paid directly to the hotel by you.

ANDAZ MAUI AT WAILEA RESORT



1 King Bed Ocean View

3550 Wailea Alanui Drive, Wailea
MAP PAGE 24

From **\$2038** ^{**^}

- ◆ Beachfront with direct beach access, just steps from Mōkapu Beach
- ◆ The Feast at Mōkapu, the most exclusive luxury Lu'au experience on Maui
- ◆ Apothecary-style experience at the 'Awili Spa and Salon.

^Resort Fee includes GoPro camera rental, outrigger canoe excursions, guided kayak tours, ocean activity rentals, and more.

Location: Located in the luxury resort community of Wailea, on the crescent-shaped shores of Maui. Distances: Beachfront, Shops at Wailea 1km.

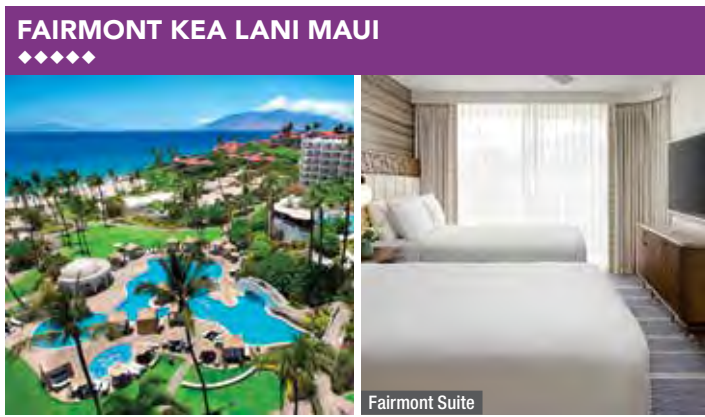
Property Features: Pools (5 – including poolside bar), Restaurants (5), 24-hour Mōkapu Market, Awili Spa and Salon.

Room Features: Air-conditioning, Private lanai, Nespresso coffee maker, Mini bar (free – replenished daily).

Max Capacity: 1 King Bed/1 King Bed with Resort View Room/1 King Bed Partial Ocean View Room/1 King bed Ocean View Room – 2, 2 Queen Beds, 2 Queen Beds with Resort View Room/2 Queen Beds Partial Ocean View Room/2 Queen Beds Ocean View Room – 4.

^Price includes USD56.62 Resort Fee per room per day to be paid direct to the hotel by you.





4100 Wailea Alanui Drive, Wailea
MAP PAGE 24
From **\$2795** *^

- ❖ Kids will love the 42 metre waterslide and the two activity pools
 - ❖ Range of Hawaiian and cultural activities on-site
 - ❖ State-of-the-art Willow Stream Spa
- ^Resort Fee includes Wi-Fi, one hour snorkel equipment rental, overnight parking, pool and beach amenities and more.
- Location:** On the golden sands of Wailea's Polo Beach Park. Distances: Beachfront, The Shops at Wailea 1.5km.
- Property Features:** Cultural activities, Pools (3 – including 2 family, 1 adults only), Restaurants (4), Bars (3), Kids club 5-12 years (free), Willow Stream Spa, Gym, Valet parking (extra charge), 450 rooms.
- Room Features:** Air-conditioning, Balcony, Tea/coffee making facilities, Ironing facilities, Hair dryer, Safe.
- Max Capacity:** Fairmont Suite/Fairmont Garden View Suite/Mountain Side Suite/Partial Ocean View Suite/Ocean View Suite/Deluxe Ocean View Suite – 4.
- ^Price includes USD58.98 Resort Fee per room per day to be paid direct to the hotel by you.



2365 Ka'anapali Parkway, Lahaina
MAP PAGE 24
From **\$2467** *^

- ❖ Authentic Wailele Luau show held Sunday, Tuesday and Thursday year round
 - ❖ Famous Heavenly Spa by Westin™
 - ❖ Ocean view from all dining outlets
- ^Resort Fee includes Wi-Fi, activities, welcome drink, shuttle services and more.
- Location:** Surrounded by lush gardens with waterfalls, the 12 acre resort is set on the Ka'anapali beachfront. Distances: Beachfront, Whalers Village shopping centre 350m.
- Property Features:** Pools (5), Spa, Restaurants and bars (5), Wailele Luau, 24 hour room service, Westin Family Kids Club 5-12 years (extra charge), Heavenly Spa by Westin™ spa, 24 hour fitness centre, 743 rooms.
- Room Features:** Air-conditioning, Balcony, Cable TV, In-room movies (pay to view), Tea/coffee making facilities, Ironing facilities, Hair dryer.
- Max Capacity:** Mountain View/Garden View/Ocean View/Superior Ocean View/Oceanfront Room/Executive Suite – 4. Other room types also available.
- ^Price includes USD53.98 Resort Fee per room per day to be paid direct to the hotel by you.



HYATT REGENCY MAUI RESORT & SPA



200 Nohea Kai Drive, Ka'anapali
MAP PAGE 24
From **\$1617** *^

- ❖ Oceanfront Kamaha'o Spa
 - ❖ Drums of the Pacific Luau show performed nightly on-site
 - ❖ Six free-form pools with waterfalls, waterslides and a rope bridge
- ^Resort Fee includes lei greeting on arrival, daily resort activities, yoga and fitness classes, two reusable water bottles, and more.
- Location:** On Maui's west coast occupying 40 oceanfront acres on Ka'anapali Beach. Distances: Beachfront, Whalers Village shopping centre 1km.
- Property Features:** Pools (6), Restaurants (5), Bar, Day spa, Gym, Parking (extra charge), 810 rooms.
- Room Features:** Air-conditioning, Balcony, Tea/coffee making facilities, Cable TV, Docking station, Ironing facilities.
- Max Capacity:** King Bed/Queen and Queen Bed/Golf Mountain View/Partial Ocean View/Partial Ocean View Lahaina Tower/Ocean View/Ocean View Lahaina Tower/Oceanfront/Partial Ocean View Club Access/Oceanfront Club Access – 4.
- ^Price includes USD47.18 Resort Fee per room per day to be paid direct to the hotel by you.



*FROM PRICES ARE A GUIDE ONLY, subject to change and availability and are in Australian Dollars. Prices are per room per night for 2 people, unless otherwise specified and based on the lowest room category for travel in low season. For full terms and conditions, refer to the Booking Conditions on the inside back cover of this brochure.

ISLAND OF HAWAI'I

The best kept secret of the Hawaiian Islands is the Island of Hawai'i. Visit the Kona and Kohala Coasts for their white sand beaches and be sure to snorkel or dive in the clear waters. Head to Hawai'i Volcanoes National Park to see steam vents, rainforests and deserts.

SEE

- Look out for whales along the Kohala Coast between December and May

DO

- Visit Punalu'u Black Sand Beach
- Stargaze on Maunakea, the tallest sea mountain in the world
- Learn about Hawaiian culture at Pu'uuhonua O Honaunau National Historical Park
- Experience a night snorkel with Manta rays on the Kona and Kohala Coasts

EAT & DRINK

- Try the famous Kona coffee at Kona Coffee & Tea café

WHAT'S ON

Merrie Monarch Festival

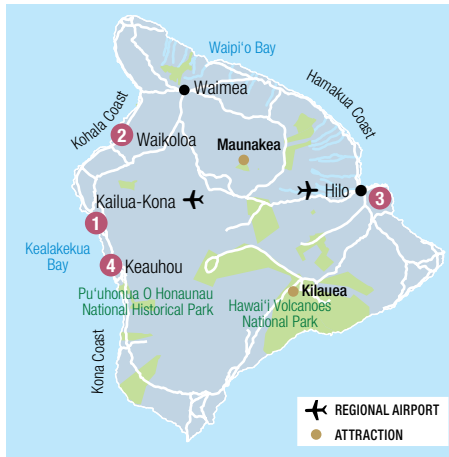
31 March to 6 April

Kona Coffee Cultural Festival

November (dates to be confirmed)



Anaehoomalu Bay



REF.	APARTMENTS	PAGE
1	Aston Kona by the Sea	29
2	Fairway Villas Waikoloa by Outrigger	29

REF.	HOTELS	PAGE
3	Hilo Hawaiian Hotel	29
2	Hilton Waikoloa Village	30
4	Outrigger Kona Resort & Spa	30
1	Royal Kona Resort	30
2	Waikoloa Beach Marriott Resort & Spa	30



PRIVATE AIRPORT TRANSFERS

Get your holiday off to a great start with a door-to-door private transfer service. Convenient transfers are available 24 hours a day, 7 days a week from Kailua-Kona Airport. Sit back, relax and be transferred in air-conditioned comfort. Approximate travel distance from Kailua-Kona Airport to Waikoloa is 40 kilometres.

	1 to 14 People
Kailua-Kona accommodation	\$305*^
Waikoloa accommodation	\$399*^

^Price based on per vehicle one way from Kailua-Kona Airport. Children 0 to 3 yrs are free when they do not occupy a seat.



BIG ISLAND HIGHLIGHTS

See more on this complete island excursion created for those wishing to see as much of Hawai'i Island as possible in one day. Travel south into Kona coffee country and visit Bay View Farm, a working 24-acre coffee farm. The adventure continues through the South Kona and Ka'u Districts with stunning views alternating between stark lava flows and Hawaiian dry forest. Stop briefly at picturesque Punalu'u Black Sand Beach and travel to Hawai'i Volcanoes National Park.

Includes:

- Visit to Hawai'i Volcanoes National Park
- Scenic viewing of stark lava flows and Hawaiian dry forest • Kona coffee tasting
- Picnic lunch • Dinner

Duration: 11 hours

Departs: Thu to Mon from Waikoloa at 7am, Kona at 8am

	Adult	Child 5-11 yrs
Full Day Tour	\$428*	\$411*



DELUXE VOLCANO EXPERIENCE

Take in expansive views of the Kona coastline on your way to sample some of the island's finest homegrown coffees and locally-made Hawaiian sweetbreads and malasadas. Dig your toes in a black sand beach before the tour climbs 4,000 feet to visit Hawaii Volcanoes National Park where you'll see some of the world's most unique geological landscapes. End the day with a three course dinner, then head back to Kona over Saddle Road under the stars of the Milky Way.

Includes:

- Guided tour of Hawaii Volcanoes National Park
- Lava lake viewing at night (if volcano is erupting)
- Picnic lunch
- Three course dinner at Historic Kilauea Lodge

Duration: 11 hours

Departs: From Waikoloa at 9:30am, Kona at 10:30am

	Adult	Child 5-11 yrs
Full Day Tour	\$510*	\$494*

*FROM PRICES ARE A GUIDE ONLY, subject to change and availability and are in Australian Dollars. Prices are per person, unless otherwise specified and based on travel in low season. For full terms and conditions, refer to the Booking Conditions on the inside back cover of this brochure.

ASTON KONA BY THE SEA



1 Bedroom Partial Ocean View

75-6106 Ali'i Drive, Kailua-Kona
MAP PAGE 28

From **\$630***^

- Great for families with apartment-style accommodation featuring kitchen and washer/dryer
- Each apartment has a balcony with full or partial ocean views

^Amenity Fee includes Wi-Fi access, DVD and PlayStation 3 games hire, daily newspaper, and local telephone calls.

Location: Oceanfront resort fronting the rocky shoreline in Kailua-Kona. Distances: Oceanfront, Town centre 4.5km.

Property Features: Pool, Spa, Barbecue area, Parking (free), 86 rooms.

Room Features: Air-conditioning, Balcony, Tea/coffee making facilities, Kitchen with microwave and dishwasher, Cable TV, DVD player, PlayStation 3, Ironing facilities, Washer/dryer, Hair dryer, All rooms non smoking.

Max Capacity: 1 Bedroom Partial Ocean View/1 Bedroom Ocean View/1 Bedroom Ocean Front – 4, 2 Bedroom Ocean View/2 Bedroom Ocean Front – 6.

^Price includes USD27.13 Amenity Fee per room per day to be paid direct to the hotel by you.

FAIRWAY VILLAS WAIKOLOA BY OUTRIGGER



69-250 Waikoloa Beach Drive, Waikoloa
MAP PAGE 28

From **\$820***^^

- Great for self-catering with a fully equipped kitchen in each apartment and a barbecue area on-site
- Infinity pool and lava-rock whirlpool spa

Location: Within a gated community on the Kohala Coast, surrounded by the Waikoloa Beach Golf Course. Distances: Beach 1.4km, Town centre 700m.

Property Features: Pool, Spa, Barbecue area, Gym, Parking (free – 1 vehicle per unit), 58 rooms.

Room Features: Air-conditioning, Balcony, Kitchen with microwave and dishwasher, Cable TV, Washer/dryer, Ironing facilities, Hair dryer.

Max Capacity: 1 Bedroom Golf View – 3, 2 Bedroom Golf View – 6, 2 Bedroom Golf View with Loft – 7, 3 Bedroom Golf View – 8.

^Minimum 4 night stay applies. +USD311.30 (for 1 Bedrooms) Cleaning Fee plus a USD69.59 Mandatory Damage Protection charge per stay to be paid directly to the hotel by you. Room servicing during stay is optional (extra charge applies).

HILO HAWAIIAN HOTEL



Standard

71 Banyan Drive, Hilo
MAP PAGE 28

From **\$409***^

- Large freshwater swimming pool with a sundeck
- Ideally located for exploring Hawai'i Volcanoes National Park
- Free self parking (based on availability)

^Resort Fee includes Wi-Fi access, cultural activities three times a week, water bottle (per person), dining and attraction discounts, and local telephone calls.

Location: On Hilo Bay and approximately three kilometres from Hilo Airport. Distances: Waterfront, Town centre 2.6km.

Property Features: Pool, Sundeck, Restaurant, Bar, Guest laundry, Resort shop, Lift, 24 hour reception, Parking (free), 286 rooms.

Room Features: Air-conditioning, Balcony (most rooms), Cable TV, Tea/coffee making facilities, Ironing facilities, Hair dryer.

Max Capacity: Standard/Superior/Deluxe Ocean View/1 Bedroom Banyan Suite/ 1 Bedroom Ocean View Suite – 4, Junior Suite – 2.

^Price includes USD29.49 Resort Fee per room per day to be paid direct to the hotel by you.



ISLAND OF HAWAI'I ACCOMMODATION

ROYAL KONA RESORT



75-5852 Ali'i Drive, Kailua-Kona
MAP PAGE 28

From **\$515**^{*^}

- ❖ Voyagers of the Pacific Luau evening show on-site
- ❖ Don's Mai Tai Bar is the place for a Mai Tai with an ocean view
- ❖ Explore the ocean without leaving the resort in the Saltwater Lagoon

^Resort Fee includes Wi-Fi, two bottles of water, daily yoga, cultural activities and more.

Location: Set oceanfront, within easy walking distance of the restaurants, shops and activities in Kona town.

Property Features: Luau, Restaurant, Bar, Pool, Saltwater swimming lagoon, Day spa, Massage facilities, Gym, Tennis courts (4), Guest Laundry, Non smoking, 436 rooms.

Room Features: Air-conditioning, Balcony, Mini-refrigerator and wet bar, Tea/coffee making facilities, Cable TV, In-room movies (pay to view), Ironing facilities, Hair dryer, Safe.

Max Capacity: Standard/Partial Ocean View/Ocean View/Ocean Front View/Ocean Front Corner King – 4. Other room types also available.

^Price includes USD25.95 Resort Fee per room per day to be paid direct to the hotel by you.

OUTRIGGER KONA RESORT & SPA



78-128 Ehukai Street, Kailua-Kona
MAP PAGE 28

From **\$743**^{*^}

- ❖ The resort overlooks Keauhou's Giant manta ray coastal feeding ground
- ❖ Feast & Fire Luau held on-site Monday and Thursday evenings
- ❖ Hula, lei making, ukulele and Hawaiian language lessons available

^Resort Charge includes welcome shell lei, cultural activities, enhanced Wi-Fi access, 1 daily paddleboard rental for 2 hours and more.

Location: Standing at the entrance to Keauhou Bay on the Kona Coast and the closest resort to Hawai'i Volcanoes National Park. Distances: Beachfront, Town centre 1.6km.

Property Features: Cultural Hawaiian activities, Wi-Fi (common areas – extra charge), Pools (1 – ocean front family-friendly, 1 – adults only), Spas (2), Restaurants (2), Bar, Gym, Day spa, Tennis courts (2), Games room, Parking (extra charge), 511 rooms.

Room Features: Air-conditioning, Balcony, Cable TV, Tea/coffee making facilities, Ironing facilities.

Max Capacity: Garden View/Mountain View/Partial Ocean View/Partial Ocean View Club/Ocean View/Ocean View Club/Ocean Front/Ocean Front Club/Club Ocean View Suite/Club Deluxe Oceanfront Suites/Presidential Suite – 4.

^Price includes USD35.38 Resort Charge per room per day to be paid direct to the hotel by you.



HILTON WAIKOLOA VILLAGE



69-425 Waikoloa Beach Drive, Waikoloa
MAP PAGE 28

From **\$1460**^{*^}

- ❖ Close to 27 holes of championship golf
- ❖ Mahogany canal boats and trams available for travelling around the grounds
- ❖ Multiple dining options including the Legends of Hawaii Luau

^Resort Charge includes Wi-Fi, DVD and PlayStation 3 games hire, children's pool activities and scavenger hunt, fitness and yoga classes, and more.

Location: In Waikoloa along the Kohala Coast on 62 oceanfront acres. Distances: Beachfront, Town centre 1.5km.

Property Features: Cultural Hawaiian activities, Pools (3), Restaurants (4), Café (1), Bars (2), Day spa, Tennis court, Children and family activities, 664 rooms.

Room Features: Air-conditioning, Balcony, Tea/coffee making facilities, Cable TV.

Max Capacity: Palace Tower Resort View/Palace Tower Ocean View/Makai at Lagoon Tower Mountainside/Makai at Lagoon Tower Oceanside – 4. Other room types also available.

^Price includes USD53.08 Resort Charge per room per day to be paid direct to the hotel by you.

WAIKOLOA BEACH MARRIOTT RESORT & SPA



69-275 Waikoloa Beach Drive, Waikoloa
MAP PAGE 28

From **\$1678**^{*^}

- ❖ Sunset Luau with Hawaiian cuisine and dancing on Mondays and Wednesdays
- ❖ Three outdoor swimming pools and a waterside
- ❖ Short drive to Waikoloa Beach Resort Golf's two championship courses

^Resort Fee includes Wi-Fi, activities and more.

Location: Fronting directly onto the golden sands of Anaeho'omalulu Bay on the Kohala Coast. Distances: Beachfront, Town centre 12km.

Property Features: Restaurant, Bar, Pools (2 – heated infinity and children's), Mandara Spa, Gym, Guest laundry, 290 rooms.

Room Features: Balcony, Tea/coffee making facilities, Ironing facilities, Hair dryer.

Max Capacity: Resort View King/Pool View/Ocean View/Ocean Front/Corner/Cabana – 4.

^Price includes USD35.39 Resort Fee per room per day to be paid direct to the hotel by you.





Na Pali Coast

REF.	APARTMENTS	PAGE
1	Aston at Poipu Kai	32
2	Waipouli Beach Resort & Spa Kauai by Outrigger	32

REF.	HOTELS	PAGE
2	Aston Islander on the Beach	32
1	Grand Hyatt Kauai Resort & Spa	33
2	Kauai Shores Hotel	32
3	Outrigger Kauai Beach Resort	33
1	Sheraton Kauai Resort	33



KAUAI

Kauai has incredible natural beauty with soaring mountains, jagged cliffs and cascading waterfalls. Discover the island's charm on one of the 60 sandy beaches – some of the best are Poipu Beach, Lydgate Beach Park and Kealia Beach. For adventure, hike Koke'e State Park or kayak along the Wailua River.

SEE

- Marvel at Waimea Canyon, known as the 'Grand Canyon of the Pacific'

DO

- Try ziplining above Kauai's lush valleys
- Go mountain tubing down the old plantation ditches
- Snorkel at Kee Beach and see an abundance of marine life
- Take a helicopter flight over the Na Pali Coast

EAT & DRINK

- Cool off with ice cream from Lappert's Hawaii, located in Hanapepe, Princeville and Koloa

WHAT'S ON

Koloa Plantation Days

July (dates to be confirmed)

Waimea Town Celebration

February (dates to be confirmed)



AIRPORT TRANSFERS

Get your holiday off to a great start with a door-to-door shared coach transfer service. Convenient transfers are available 24 hours a day, 7 days a week from Lihue Airport to Lihue, Kapa'a, Poipu and Princeville accommodation. Sit back, relax and be transferred in air-conditioned comfort. Approximate travel distance from Lihue Airport to Lihue is 3 kilometres, Kapa'a is 16 kilometres, Poipu is 25 kilometres and Princeville is 49 kilometres.

Coach Transfer Per Person	Adult/Child
Lihue & Kapa'a accommodation	\$41*^
Poipu accommodation	\$93*^
Private Transfer Per Vehicle	1 to 5 People
Lihue accommodation	\$187*^
Kapa'a accommodation	\$210*^
Poipu accommodation	\$352*^

^Price based on way to/from Lihue Airport. Children 0 to 3 yrs are free when they do not occupy a seat. Minimum 2 people.



HAWAII MOVIE TOUR

Experience Hollywood in Hawaii on this guided tour of Kauai's famous movie locations. Fans of Gilligan's Island may recognise Moloa'a Beach. Be awed by Hailua Falls, which was featured in Tropic Thunder. See Coco Palms Resort where Fantasy Island and Blue Hawaii were filmed.

Includes:

- Return transfers from Lihue, Wailua, Poipu and Princeville accommodation
- Visit multiple movie locations

Duration: 8 hours

Departs: Mon, Wed, Fri from Lihue, Wailua, Poipu at 7am

	Adult	Child 4-11 yrs
Full Day tour from Lihue & Kapa'a accommodation	\$285*^	\$227*^
Full day tour from Poipu accommodation	\$302*^	\$245*^

^Minimum 2 people.



ULTIMATE KAUAI ADVENTURE HELICOPTER FLIGHT

This island flight, departing from Lihue, flies over areas of the 'Garden Island' which have been part of 75 Hollywood film productions. The pilots will take time to share with you the grandeur of Kauai that attracts visitors from around the world.

Includes:

- Spectacular views of the 'garden island'
- Expert pilot with informative commentary
- Return transfers from Kauai accommodation

Duration: 45 – 55 minutes

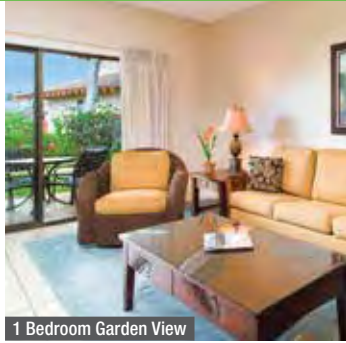
Departs: Eight times daily between 8am and 4pm

	Adult
Scenic Flight	\$510*

*FROM PRICES ARE A GUIDE ONLY, subject to change and availability and are in Australian Dollars. Prices are per person, unless otherwise specified and based on travel in low season. For full terms and conditions, refer to the Booking Conditions on the inside back cover of this brochure.

KAUA'I ACCOMMODATION

ASTON AT POIPU KAI



1 Bedroom Garden View

1775 Poipu Road, Koloa
MAP PAGE 31

From **\$803** *^+

- ❖ Apartment-style accommodation with full kitchen and washer/dryer
- ❖ Ideal for families or groups with units catering for up to six guests
- ❖ Within walking distance of Poipu, Brennecke's and Shipwreck beaches

^Resort Fee includes Wi-Fi, DVD hire, laundry detergent, local telephone calls, and access to Poipu Beach Athletic Club.

Location: On the south side of Kaua'i, spread over 84 landscaped acres. Distances: Beach 750m, Town centre 2.8km.

Property Features: Pools (6), Spa, Barbecue area, Tennis court, Parking (free), 383 rooms.

Room Features: Fan, Balcony, Tea/coffee making facilities, Kitchen, Cable TV, PlayStation 3, Ironing facilities, Washer/dryer, Hair dryer, Safe.

Max Capacity: 1 Bedroom Ocean View – 2, 1 Bedroom Garden View/2 Bedroom Garden View – 4, 2 Bedroom Ocean View – 6.

^Price includes USD11.79 Resort Fee per room per day to be paid direct to the hotel by you.

+ USD97.32 Cleaning Fee plus a USD69.59 Mandatory Damage Protection charge per stay to be paid directly to the hotel by you. Room servicing during stay is optional (extra charge applies).

ASTON ISLANDER ON THE BEACH



440 Aleka Place, Kapa'a
MAP PAGE 31

From **\$501** *^

- ❖ Spacious guest rooms each with a private balcony
- ❖ On-site laundry room, great for longer stays
- ❖ Adjacent to the Coconut Marketplace for shopping and dining

^Amenity Fee includes Wi-Fi, beverage voucher (one per adult), DVD and PlayStation 3 games hire, bicycle hire, and more.

Location: In a beachfront setting along Kauai's Coconut Coast. Distances: Beachfront, Town centre 800m.

Property Features: Internet facilities, Pool, Spa, Poolside bar, Guest laundry, Parking (free), Non smoking, 199 rooms.

Room Features: Air-conditioning, Balcony, Tea/coffee making facilities, Microwave, PlayStation 3, DVD player, Cable TV, Ironing facilities, Hair dryer, Safe.

Max Capacity: Hotel Garden View/Hotel Partial Ocean View/Hotel Ocean View/Hotel Oceanfront View/1 Bedroom Ocean View – 4.

^Minimum 2 night stay applies. Price includes USD23.59 Amenity Fee per room per day to be paid direct to the hotel by you.



KAUAI SHORES HOTEL



Standard

420 Papaloa Road, Kapa'a
MAP PAGE 31

From **\$451** *^

- ❖ Experience toes-in-the-sand dining at Lava Lava Beach Club
- ❖ All rooms feature private open air lanais
- ❖ Boast warm and bright island decor

^Resort Fee includes Wi-Fi, self or valet parking, two bottles of water, outdoor yoga classes, bicycle hire, use of beach towels and chairs.

Location: On Kaua'i's Coconut Coast close to historic Kapa'a town and Kaua'i's spectacular landmarks. Distances: Beachfront, Town centre 9.5km.

Property Features: Pools (2), Restaurant, Bar, Sundeck, Spa, Fire pit, Lawn games, Guest laundry, Non smoking, 200 rooms.

Room Features: Air-conditioning, Balcony or patio, Mini-refrigerator, Tea/coffee making facilities, Ironing facilities, Hair dryer, Safe.

Max Capacity: Standard/Garden/Pool View/Ocean View/Deluxe Garden View with Kitchenette – 4.

^Price includes USD25.95 Resort Fee per room per day to be paid direct to the hotel by you.

WAIPOULI BEACH RESORT & SPA KAUAI BY OUTRIGGER



4-820 Kuhio Highway, Kapa'a
MAP PAGE 31

From **\$810** *^+

- ❖ Heated river pool with waterslides and three sand-bottom whirlpool spas
- ❖ Self-contained one and two bedroom units with gourmet kitchen
- ❖ Beauty and spa treatments at Spa by the Sea

^Resort Fee includes Wi-Fi, parking, long distance calls, and access to barbecue area.

Location: Set among tropical gardens on the east side of Kaua'i and only steps from the beach. Distances: Beachfront, Town centre 200m.

Property Features: Pool, Spas (3), Restaurant, Bar, Day spa, Gym, Parking, 196 rooms.

Room Features: Air-conditioning, Balcony, Kitchen (except Studio), Cable TV, Washer/dryer (except Studio), Ironing facilities, Hair dryer, Safe, All rooms non smoking.

Max Capacity: Studio – 2, 1 Bedroom – 4, 2 Bedroom – 6.

^Minimum 2 night stay applies. Price includes USD30.66 Resort Fee per room per day to be paid direct to the hotel by you. + USD171.04 Cleaning Fee plus a USD69.59 Mandatory Damage Protection charge per stay to be paid directly to the hotel by you. Room servicing during stay is optional (extra charge applies).



OUTRIGGER KAUA'I BEACH RESORT



4331 Kaua'i Beach Drive, Lihu'e
MAP PAGE 31

From **\$714***^

- ❖ 25 lush acres of oceanfront property
- ❖ 4 pools including a sandy bottom oceanfront pool, 2 waterfalls, a water slide and pool bar

^Resort Charge includes Wi-Fi, cultural activities, E Komo Mai Reception (Tue), 2 for 1 green fees at Hokualea Ocean Golf Course and more.

Location: Centrally located along Kaua'i's rustic coastline and close to the airport. Distances: Beachfront, Town centre 7km.

Property Features: Private beach, Pools (4 – including 3 lagoon pools, 1 children's), Waterfalls, Waterslide, Restaurants (2), Bar, Nightly entertainment, Room service, Day spa, Gym, 350 rooms.

Room Features: Ocean views, Balcony, Tea/coffee making facilities, Cable TV, Docking station, Ironing facilities, Hair dryer, Safe.

Max Capacity: Mountain Garden View/Deluxe Mountain Garden View/Lagoon View/Deluxe Lagoon View/Pool View/Deluxe Pool View/Ocean View – 4.

^Price includes USD41.29 Resort Charge per room per day to be paid direct to the hotel by you.



SHERATON KAUI RESORT



Deluxe Garden View

2440 Hoonani Road, Poipu Beach
MAP PAGE 31

From **\$1587***^

- ❖ Lagoon pool with ocean views
- ❖ 'Auli'i Lu'au is held twice weekly on-site
- ❖ Large and stylish guest rooms

^Resort Fee includes Wi-Fi, activities and more.

Location: On Kaua'i's sunny south shore in the heart of Poipu Beach. Distances: Beachfront, Town centre 1.3km.

Property Features: Cultural Hawaiian activities, Pools (2), Restaurants (3), Bars (2), Room service, Gym, Guest laundry, Parking (extra charge), 390 rooms.

Room Features: Air-conditioning, Balcony, Tea/coffee making facilities, Cable TV, Ironing facilities, Hair dryer, Safe.

Max Capacity: Deluxe Garden View/Deluxe Oceanfront/Luxury Oceanfront/Deluxe Oceanfront Suite – 4.

^Price includes USD47.18 Resort Fee per room per day to be paid direct to the hotel by you.



GRAND HYATT KAUI RESORT & SPA



Deluxe Ocean View

1571 Poipu Road, Koloa
MAP PAGE 31

From **\$1457***^

- ❖ Multi-level pool with a saltwater lagoon, lava-rock lazy river, waterfalls, secret caves and 45 metre waterslide
- ❖ Next door to the 18 hole championship Poipu Bay Golf Course

^Resort Fee includes lei greeting on arrival, two reusable water bottles, fitness classes, and more.

Location: Set in the sunny south of Kaua'i on Shipwreck's Beach. Distances: Beachfront, Town centre 3.5km.

Property Features: Cultural activities, Restaurants (5), Lounges (5), Pools (4), Waterslide, Day spa, Gym, 605 rooms.

Room Features: Air-conditioning, Balcony, Tea/coffee making facilities, Bathrobes, Ironing facilities, Hair dryer, Safe.

Max Capacity: King/Pool View King/Partial Ocean King/Ocean View King/Deluxe Ocean View/Club – 3. Other room types also available.

^Price includes USD53.08 Resort Fee per room per day to be paid direct to the hotel by you.



ACCOMMODATION INDEX

O'AHU

Aqua Oasis	13
Aston at the Waikiki Banyan.....	13
Aston Waikiki Circle Hotel	13
Aston Waikiki Sunset	14
Castle Waikiki Shore	13
Courtyard by Marriott Oahu North Shore	23
Embassy Suites by Hilton Waikiki Beach Walk	15
Halekulani.....	20
Hilton Hawaiian Village Waikiki Beach Resort	19
Hilton Waikiki Beach	16
Hyatt Centric Waikiki Beach.....	15
Hyatt Regency Waikiki Beach Resort & Spa.....	19
Ilikai Hotel & Luxury Suites.....	16
Luana Waikiki Hotel & Suites	15
Moana Surfrider, A Westin Resort & Spa.....	21
OHANA Waikiki East by Outrigger.....	14
Outrigger Reef Waikiki Beach Resort	20
Outrigger Waikiki Beachcomber Hotel.....	17
Outrigger Waikiki Beach Resort	17

Prince Waikiki	18
Queen Kapi'olani Hotel	16
Regency on Beachwalk Waikiki by Outrigger	18
The Ritz-Carlton Residences, Waikiki Beach.....	21
The Royal Hawaiian, A Luxury Collection Resort	22
Sheraton Princess Kaiulani	15
Sheraton Waikiki	20
Trump International Hotel Waikiki	22
Turtle Bay Resort, North Shore	23
Waikiki Beach Marriott Resort & Spa.....	18
Waikiki Malia.....	14

MAUI

Andaz Maui at Wailea Resort	26
Aston at The Whaler on Kaanapali Beach	26
Aston Kaanapali Shores.....	26
Fairmont Kea Lani Maui	27
Honua Kai Resort & Spa.....	26
Hyatt Regency Maui Resort & Spa.....	27
Outrigger Ka'anapali Beach Resort.....	25
Palms at Wailea Maui.....	25

Royal Kahana Maui by Outrigger.....	25
The Westin Maui Resort & Spa	27

ISLAND OF HAWAII

Aston Kona by the Sea.....	29
Fairway Villas Waikoloa by Outrigger.....	29
Hilo Hawaiian Hotel	29
Hilton Waikoloa Village.....	30
Outrigger Kona Resort & Spa	30
Royal Kona Resort.....	30
Waikoloa Beach Marriott Resort & Spa	30

KAUAI

Aston at Poipu Kai	32
Aston Islander on the Beach.....	32
Grand Hyatt Kauai Resort & Spa	33
Kauai Shores Hotel.....	32
Outrigger Kaua'i Beach Resort	33
Sheraton Kauai Resort.....	33
Waipouli Beach Resort & Spa Kauai by Outrigger	32



Wailua Falls, Kaua'i

Hawaii Tourism Authority © 2015 by Taylor Johnson

Please read these Booking Conditions carefully as they apply to all bookings with Viva Holidays.

HOW TO BOOK

Contact your ATAS travel agent and request a reservation. All verbal quotes provided are an estimate only and subject to change until confirmed in writing.

PRICES & CONDITIONS

This brochure was produced on 5 September 2023. Unless otherwise stated, prices are in Australian dollars and include GST where applicable. Exchange rates used when pricing this brochure are as at 22 August 2023. All prices are subject to availability, subject to change and can be withdrawn or varied without notice. Prices are to be used as a guide only. Accommodation prices are based on the lowest room category in low season. Some prices are based on dynamic rates, which means they will be different from the advertised price if it has been varied by the supplier since being advertised by Viva Holidays. Price changes may occur by reason of matters outside our control which increase the cost of the Product or Service. Such factors include (without limitation) adverse currency fluctuations, fuel surcharges, taxes and airfare increases. Surcharges and minimum stays may apply due to demand, Christmas and New Year's Eve, school and public holidays, special events and other circumstances. All prices are the lowest available prices at the time of print and are a guide only. Please check all prices, availability, fees, conditions and information with your travel agent before booking.

If we must change any part of your booking for reasons beyond our control, for example, an Accommodation Supplier overbooks accommodation, or if there is an increase in taxes or Supplier charges, we will notify you. If any such changes result in your holiday costing more or otherwise being materially different from that originally booked, you may cancel the booking and we will refund any monies already paid less any charges levied by Suppliers.

PRICES DO NOT INCLUDE

Anything not specifically indicated as being an inclusion.

OMISSIONS & ERRORS

While every effort is made to ensure the accuracy and currency of the information in the brochures, errors or omissions may occur. All errors and omissions identified post the date of publication are notified to our retail partners to advise you. Please check with your agent for all up-to-date corrections, including prices and inclusions.

DEPOSITS & FINAL PAYMENTS

Deposit

A minimum non-refundable deposit of \$55 per person is payable within 7 days of confirmation of your booking. You will be notified of exact deposit and payment information at the time of booking. All deposits are non-refundable for changes of mind or cancellations by you (subject to your rights under the Australian Consumer Law).

Final Payment

Final payment of your holiday cost is required at least 30 days prior to departure or by sale end date or by the payment deadline specified in individual package conditions, whichever is earlier. Some services, including airfares, may require full payment at the time of booking. For bookings made less than 31 days prior to travel, full payment of holiday cost is required at the time your booking is confirmed.

Please ensure payments are made by the due dates. If this does not happen, our system will automatically cancel the booking without notice or liability to you.

Only upon payment of the full cost of your holiday do you have a final booking with the Supplier of the relevant good and/or service. In arranging your booking, Viva Holidays is acting as the agent of the Supplier of the relevant Product and at no time do you have a contract with Viva Holidays.

CREDIT & DEBIT CARD SURCHARGES

A fee will apply for payments made by debit and credit cards. Fees may vary depending on card type. Please check this fee with us or your travel agent when booking.

FEEES

Amendment Fees

If you wish to change your booking prior to departure, an amendment fee of \$30 will be charged if the overall value of the booking remains the same or decreases, in addition to any fees imposed by the Supplier of each service booked.

Late Booking Fees

A fee of \$30 will be charged for all bookings made less than 7 days prior to travel.

All fees can be varied without notice.

CANCELLATIONS & REFUNDS

Prior to Final Payment

Your deposit is forfeited.

After Final Payment

There will be no refund of your deposit, in addition to any fees imposed by the Supplier, which may be up to 100% of monies paid.

After Travel

There will be no refund if you cancel your booking once travel has commenced. There will be no refund for unused services, except for OPEN DATED services where the service was not booked with the Supplier. Requests for refunds received more than 6 months after departure date will not be accepted.

Should a refund after departure be approved, a \$110 refund processing fee will apply.

RESPONSIBILITY

Viva Holidays acts as an agent for the Suppliers (transport, tour, event or accommodation providers) who provide the various goods and/or services (Products). All bookings are subject to the terms and conditions and limitations of liability imposed by each Supplier. It is therefore important for you to obtain and read the applicable Supplier's terms and conditions as they may limit or exclude their liability to you.

In producing this brochure, we have used information provided by Suppliers. Irrespective of any measures taken by us to ensure the information contained in this brochure is accurate at the time of printing, Viva Holidays disclaims and will be exempt from liability in respect of anything misleading, false, incomplete or inaccurate and any errors, misdescription and all associated disappointment, loss, expense, damage, inconvenience, delay, death, shock, illness or injury, however caused.

Viva Holidays does not control the manner in which Products featured within this brochure are provided. Viva Holidays disclaims and will be exempt from liability for anything to do with the supply of such Products. This includes liability (whether as a matter of contract, tort, statute, restitution, or otherwise) for any direct, indirect or consequential loss, liability, claim, cost, expense, proceeding, demand, penalty, disappointment, death, injury, illness, shock, inconvenience or delay. This limitation of liability also applies irrespective of the cause, including negligence of us or a Supplier, withdrawal, cancellation or failure to provide a Product, delay, any variation in the Product, the provision of substitute Products or a change in the Supplier. Without limitation, Viva Holidays will not be responsible if the Product is not available due to inclement weather conditions or other acts of God, civil disturbances, fire, floods, acts of Government or any other authorities, accident to or failure of machinery or equipment or industrial action.

MAPS & PHOTOGRAPHS

The maps in this brochure are intended as a guide only and are not to scale. They do not necessarily reflect actual routings or accommodation or attraction locations. Accommodation room photographs are representative only and actual rooms occupied may vary in decor and inclusions from those shown.

Some images used in this brochure are supplied courtesy of tourist bureaus, hotels, tour operators, Hawaii Tourism Authority (HTA)/Tommy Lundberg/Tommy Pierucki/Tor Johnson and Island of Hawai'i Visitors Bureau.

PRODUCT DESCRIPTIONS

Product descriptions and accommodation ratings featured in this brochure are provided by the individual Suppliers. Facilities, features or ratings are subject to change at any time. Tours may not operate on certain dates and durations and departure times are approximate only. You should check at the time of booking for any changes to published information of which we may be aware.

BONDS

Bonds or credit card imprints are required by most Suppliers at the time of check-in to cover incidentals and fees not included in your holiday cost.

TRANSFERS & TOURS

Some Accommodation Suppliers provide courtesy transfers to/from the airport. It is essential that these transfers are pre-booked. Some Tour Suppliers provide complimentary pick up and return to your holiday accommodation and require a minimum number of passengers to operate. If minimum numbers are not achieved tours may be cancelled at short notice. Additionally, some Suppliers reserve the right to cancel departures for other reasons, including bad weather. Some tours and itineraries may also vary and attractions may be substituted due to seasonal conditions. Viva Holidays will not be held liable for a service variation, cancellation, delay or withdrawal, or a Supplier's failure to notify you. A full refund applies for the cancelled tour.

TRAVEL INSURANCE

We strongly recommend you take out appropriate travel insurance to cover your travel arrangements.

INTERNATIONAL TRAVEL

Each passenger is responsible for their own visa, passport (with at least 6 months validity), immigration, quarantine, customs and other requirements of the countries to be visited or transited through. Viva Holidays makes no representations as to the safety, conditions or other issues that may arise at any destination. Travel advice is available from the Australian Government at smartraveller.gov.au.

HEALTH

You must ensure you are aware of any health requirements and recommended precautions relevant to your travel and carry all necessary vaccination documentation with you to the countries to be visited. Failure to present required vaccination documentation may result in you being denied entry into a country. We recommend that you consult with your local doctor, travel medical service or specialist vaccination clinic before commencing your travel. General health advice for all destinations is also available from the Australian Government at smartraveller.gov.au.

PRIVACY

Viva Holidays collects information about you (including health information where necessary) to provide products and services to you, process your travel arrangements, facilitate your participation in loyalty programs and conduct marketing activities and market research. If the information is not provided, Viva Holidays may not be able to provide the Service requested. Viva Holidays may disclose your personal information to its related companies, carriers, travel service providers, organisations which provide services to Viva Holidays (more details are available in our Privacy Statement on our website vivaholidays.com.au) and various law enforcement agencies, airports and governments around the world for security, customs and immigration purposes. You may gain access to the information Viva Holidays holds about you by contacting our Privacy Officer in writing at 179 Normanby Road, South Melbourne VIC 3205 Australia or on privacyofficer@vivaholidays.com.au.

MONIES NOT HELD ON TRUST

All monies paid by you to us will be the property of Viva Holidays and will be a debt due and payable to the relevant Supplier (contingent on availing) once the services to which the money relates have been availed, or the relevant booking is cancelled (subject to cancellation fees). You agree and acknowledge that such monies will not be held by Viva Holidays on trust for or on behalf of you, and we may hold such monies in any account as we see fit, including with our own and/or other customer monies.

GOVERNING LAW

These conditions are governed by the laws of New South Wales, Australia and any action arising under them or in any way connected with a booking may be brought only in a court in New South Wales, Australia, subject to any law which is expressly inconsistent with this.

You acknowledge that you are 18 years of age or older and that you understand and agree with the above terms and conditions and our Privacy Policy. Please read our full booking terms and conditions at vivaholidays.com.au/policies/booking-conditions.

Travel insurance to help you on your way



nib Travel Insurance Distribution Pty Limited, ABN 40 129 262 175, AR 336467 is an authorised representative of nib Travel Services (Australia) Pty Ltd (nib), ABN 81 115 932 173, AFSL 308461 and act as nib's agent and not as your agent. This is general advice only. Before you buy, you should consider your needs, the Product Disclosure Statement (PDS), Financial Services Guide (FSG) and Target Market Determination (TMD) available from us. This insurance is underwritten by Pacific International Insurance Pty Ltd, ABN 83 169 311 193.



helloworld
TRAVEL
THE TRAVEL PROFESSIONALS



In store



13 14 15



helloworld.com.au

WE'RE PROUD TO BE
ATAS
travel accredited

VIVA
HOLIDAYS